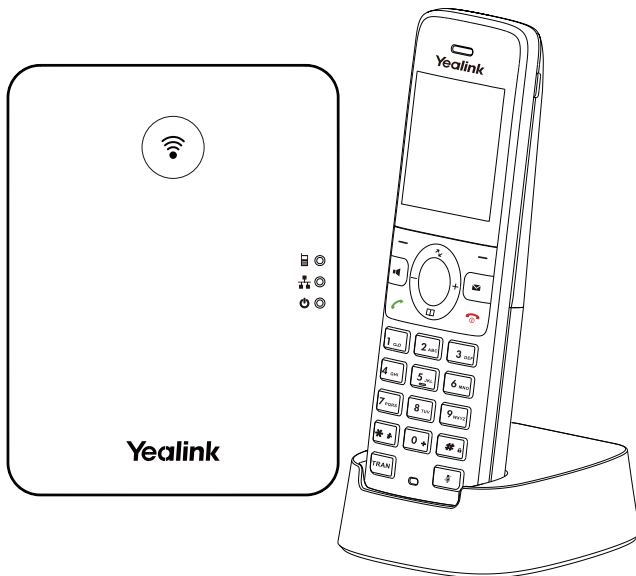


Yealink



Yealink Documentation
support.yealink.com

DECT IP Phone W71P

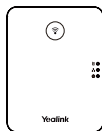


Quick Start Guide (V1.0)

W71P Package Contents



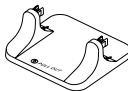
W71H
Handset



W70B Base Station



2 Power Adapters



Base Stand



Ethernet Cable



Battery Cover



Rechargeable
Battery



Charging Cradle



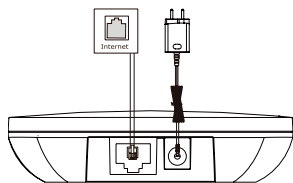
Quick Start
Guide

Note: Yealink W71P DECT IP phone consists of one W70B base station and one W71H handset.

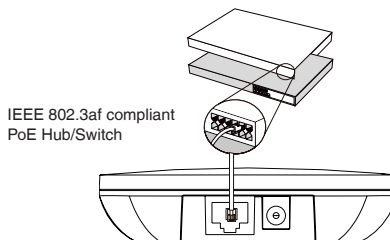
Assembling the DECT Phone

1. Connect the base station power and the network using method a or method b.

a. AC Power Option



b. PoE (Power over Ethernet) Option

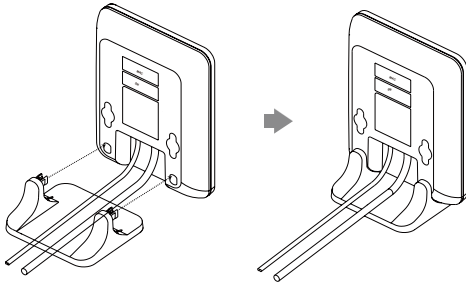


Note:

- If you choose method a, use Yealink supplied power adapter (5V/0.6A). A third-party power adapter may damage the base station.
- If you choose method b, you do not need to connect the power adapter. Make sure the hub/switch is PoE-compliant.

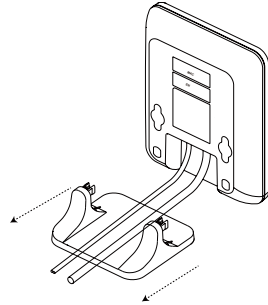
2a. (Desktop Installation) Attach and remove the base stand.

Attach the Base Stand



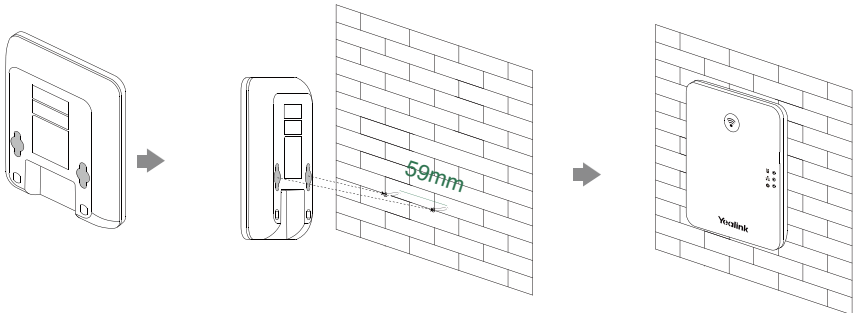
Align the snap-fits with the corresponding holes and push forward, snapping them into the holes.

Remove the Base Stand

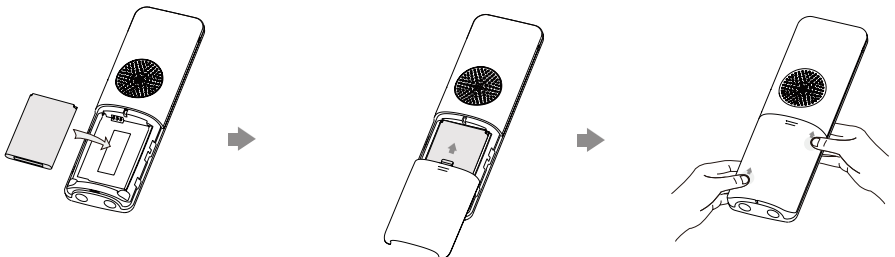


Remove the snap-fits from the holes horizontally.

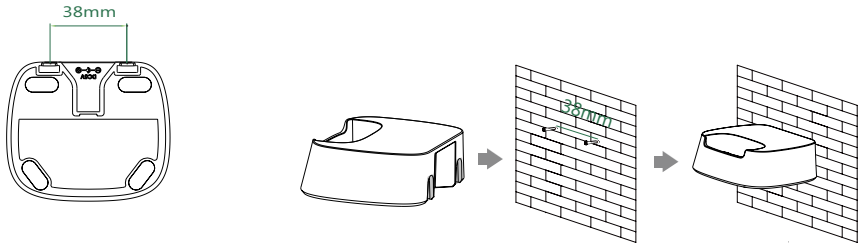
2b. (Wall-Mount Installation) Attach the base station.



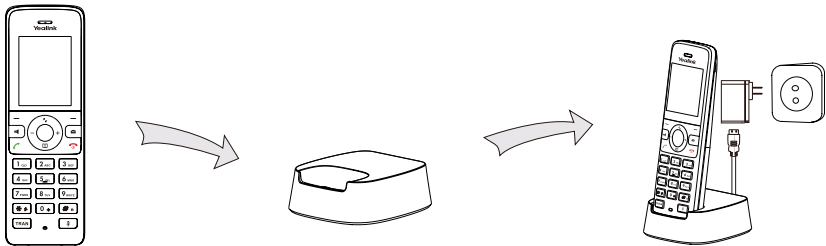
3. Insert the battery into the handset.



4. (Optional) Mount the charging cradle to the wall.



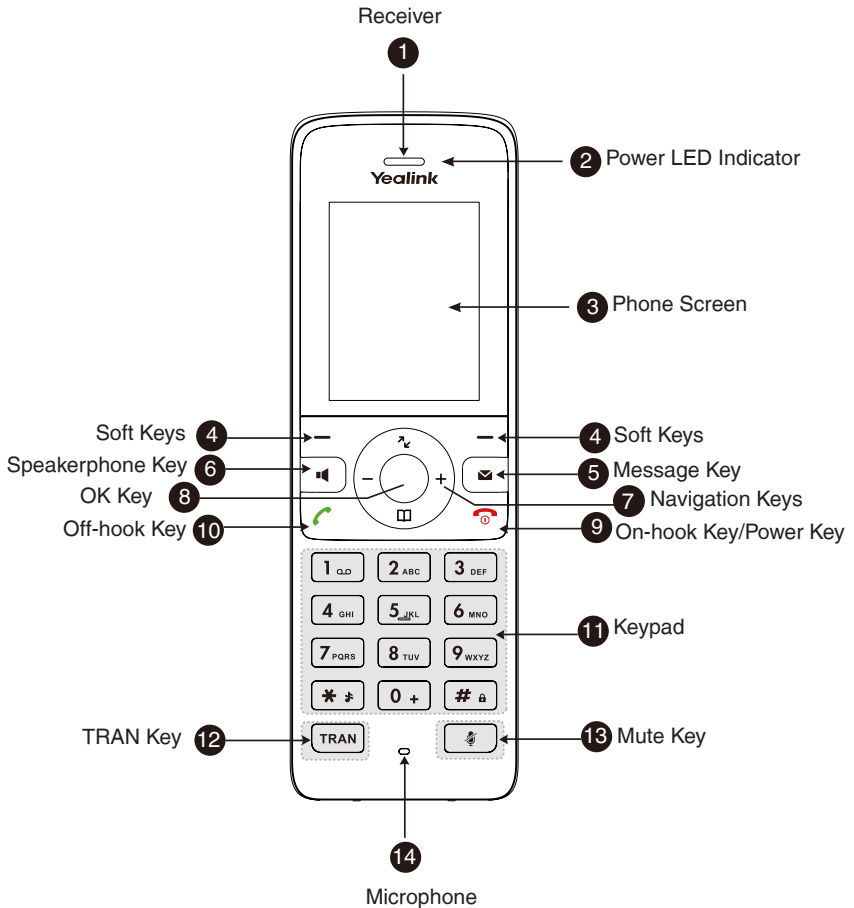
5. Connect the charging cradle and charge the handset.



Note:

- Use Yealink-supplied power adapter (5V/0.6A). A third-party power adapter may damage the handset.
- Check the charging status on the top-right corner of the LCD screen.

Hardware Component Instructions



Regulatory Notices

Operating Ambient Temperature

- Operating temperature: +14 to 122°F (-10 to 50°C)
- Relative humidity: 5% to 90%, noncondensing
- Storage temperature: -22 to +158°F (-30 to +70°C)

Warranty

Our product warranty is limited only to the unit itself, when used normally in accordance with the operating instructions and the system environment. We are not liable for damage or loss resulting from the use of this product, or for any claim from a third party. We are not liable for problems with Yealink device arising from the use of this product; we are not liable for financial damages, lost profits, claims from third parties, etc., arising from the use of this product.

Explanation of the symbols

- DC symbol
- is the DC voltage symbol.
- WEEE Warning symbol



To avoid the potential effects on the environment and human health as a result of the presence of hazardous substances in electrical and electronic equipment, and users of electrical and electronic equipment should understand the meaning of the crossed-out wheeled bin symbol. Do not dispose of WEEE as unsorted municipal waste and have to collect such WEEE separately.

Restriction of Hazardous Substances Directive (RoHS)

This device complies with the requirements of the EU RoHS Directive. Statements of compliance can be obtained by contacting support@yealink.com.

Safety Instructions

Save these instructions. Read these safety instructions before use!



General Requirements

- Before you install and use the device, read the safety instructions carefully and observe the situation during operation.
- During the process of storage, transportation, and operation, please always keep the device dry and clean, avoid collision and crash.
- Please attempt not to dismantle the device by yourself. In case of any discrepancy, please contact the appointed maintenance center for repair.
- Please refer to the relevant laws and statutes while using the device. Legal rights of others should be respected as well.



Environmental Requirements

- Place the device at a well-ventilated place. Do not expose the device under direct sunlight.
- Keep the device dry and free of dusts.
- Do not place the device on or near any inflammable or fire-vulnerable object, such as rubber-made materials.
- Keep the device away from any heat source or bare fire, such as a candle or an electric heater.



Operating Requirements

- Do not let a child operate the device without guidance.
- Do not let a child play with the device or any accessory in case of accidental swallowing.
- Please use the accessories provided or authorized by the manufacturer only.
- The power supply of the device shall meet the requirements of the input voltage of the device. Please use the provided surge protection power socket only.
- Before plugging or unplugging any cable, make sure that your hands are completely dry.
- Do not spill liquid of any kind on the product or use the equipment near water, for example, near a bathtub, washbowl, kitchen sink, wet basement or near a swimming pool.
- During a thunderstorm, stop using the device and disconnect it from the power supply. Unplug the power plug and the Asymmetric Digital Subscriber Line (ADSL) twisted pair (the radio frequency cable) to avoid lightning strike.
- If the device is left unused for a rather long time, disconnect it from the power supply and unplug the power plug.
- When there is smoke emitted from the device, or some abnormal noise or smell, disconnect the device from the power supply and unplug the power plug immediately.
- Contact the specified maintenance center for repair.
- Do not insert any object into equipment slots that is not part of the product or auxiliary product.
- Before connecting a cable, connect the grounding cable of the device first. Do not disconnect the grounding cable until you disconnect all other cables.



Battery Requirements

- Do not immerse the battery into water, which could short-circuit and damage the battery.
- Do not expose the battery to an open flame or leave the battery where it could be subjected to extremely high temperatures, which could cause the battery to explode.
- Do power the handset off before removing the battery.
- Do not try to use the battery for the power supply of any device other than this handset.
- Do not open or mutilate the battery, released electrolyte is corrosive and may cause damage to your eyes or skin.
- Use only the rechargeable battery pack delivered with the handset or those rechargeable battery packs expressly recommended by Yealink.
- Defective or exhausted battery should never be disposed of as municipal waste. Return old battery to the battery supplier, a licensed battery dealer or a designated collection facility.



Cleaning Requirements

- Before cleaning the device, disconnect it from the power supply.
- Use a piece of soft, dry and anti-static cloth to clean the device.
- Keep the power plug clean and dry.

Troubleshooting

The unit cannot supply power to Yealink device.

There is a bad connection with the plug.

1. Clean the plug with a dry cloth.
2. Connect it to another wall outlet.

The usage environment is out of operating temperature range.

1. Use in the operating temperature range.

The cable between the unit and the Yealink device is connected incorrectly.

1. Connect the cable correctly.

You cannot connect the cable properly.

1. You may have connected a wrong Yealink device.

2. Use the correct power supply.

Some dust, etc., may be in the port.

1. Clean the port.

Contact your dealer or authorized service facility for any further questions.

FCC Statement

This device complies with part 15 of the FCC Rules. Operation is subject to the following two conditions: (1) this device may not cause harmful interference, and (2) this device must accept any interference received, including interference that may cause undesired operation.

Any Changes or modifications not expressly approved by the party responsible for compliance could void the user's authority to operate the equipment.

IC Statement

This device complies with Industry Canada's licence-exempt RSSs. Operation is subject to the following two conditions:

- (1) this device may not cause interference; and

(2) this device must accept any interference, including interference that may cause undesired operation of the device. CAN ICES-3(B)

Le présent appareil est conforme aux CNR d'Industrie Canada applicables aux appareils radio exempts de licence. L'exploitation est autorisée aux deux conditions suivantes :

- (1) l'appareil ne doit pas produire de brouillage;
- (2) l'utilisateur de l'appareil doit accepter tout brouillage radioélectrique subi, même si le brouillage est susceptible d'en compromettre le fonctionnement. NMB-3(B)

Radiation Exposure Statement

This equipment complies with FCC and IC radiation exposure limits set forth for an uncontrolled environment. This equipment should be installed and operated with minimum distance 20cm between the radiator and your body.

Cet émetteur ne doit pas être Co-placé ou ne fonctionnant en même temps qu'aucune autre antenne ou émetteur. Cet équipement devrait être installé et actionné avec une distance minimum de 20 centimètres entre le radiateur et votre corps.

Contact Information

YEALINK NETWORK TECHNOLOGY CO.,LTD.

309, 3rd Floor, No.16, Yun Ding North Road, Hulli District, Xiamen City, Fujian, P.R.C

YEALINK (EUROPE) NETWORK TECHNOLOGY B.V.

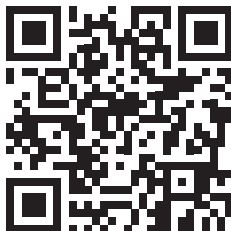
Struwwinkskyaan 3127, Atrium Building, 8th floor, 1077ZX Amsterdam, The Netherlands

YEALINK (USA) NETWORK TECHNOLOGY CO., LTD.

999 Peachtree Street Suite 2300, Fulton, Atlanta, GA, 30309, USA

Made in China

Need more help?



Yealink Documentation & Video

About Yealink

Yealink (Stock Code: 300628) is a global-leading provider of Unified Communication & Collaboration Solutions specialized in video conferencing, voice communications, and collaboration, dedicated to helping every person and organization embrace the power of "Easy Collaboration, High Productivity".

With best-in-class quality, innovative technology, and user-friendly experiences, Yealink is one of the best providers in more than 140 countries and regions, ranks No.1 in the global market share of IP Phone, and is the Top 5 leader in the video conferencing market (Frost & Sullivan, 2021).

For more information about Yealink, [click here](#).

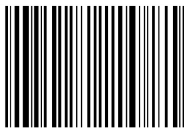
Copyright

Copyright © 2023 YEALINK(XIAMEN) NETWORK TECHNOLOGY CO., LTD.

All rights reserved. No parts of this publication may be reproduced or transmitted in any form or by any means, electronic or mechanical, photocopying, recording, or otherwise, for any purpose, without the express written permission of Yealink(Xiamen) Network Technology CO., LTD.

Technical Support

Visit Yealink WIKI (<http://support.yealink.com/>) for firmware downloads, product documents, FAQ, and more. For better service, we sincerely recommend you to use Yealink Ticketing system (<https://ticket.yealink.com>) to submit all your technical issues.



430104001888

YEALINK NETWORK TECHNOLOGY CO.,LTD.

Web: www.yealink.com

Addr: No.666 Hu'an Rd.,Huli District Xiamen City, Fujian,
P.R. C

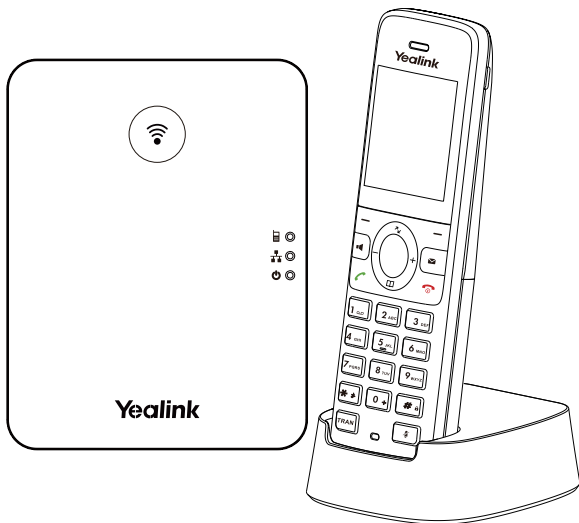
Copyright©2023 Yealink Inc. All rights reserved.

Yealink



Yealink Documentation
support.yealink.com

DECT IP Phone W71P



Quick Start Guide (V1.0)

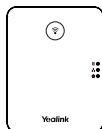
Table of Contents

English	1
Deutsch	6
Español	11
Français	16

W71P Package Contents



W71H
Handset



W70B Base Station



Base Stand



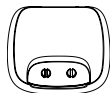
Ethernet Cable



Battery Cover



Rechargeable
Battery



Charging Cradle



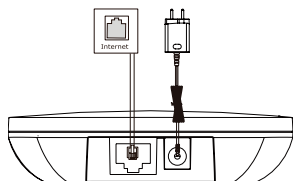
Quick Start
Guide

Note: Yealink W71P DECT IP phone consists of one W70B base station and one W71H handset.

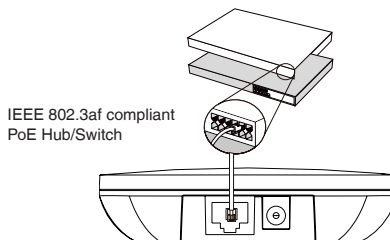
Assembling the DECT Phone

1. Connect the base station power and the network using method a or method b.

a. AC Power Option



b. PoE (Power over Ethernet) Option

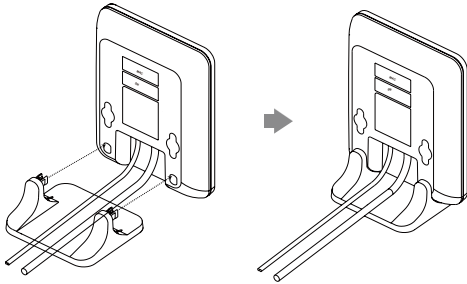


Note:

- If you choose method a, use Yealink supplied power adapter (5V/0.6A). A third-party power adapter may damage the base station.
- If you choose method b, you do not need to connect the power adapter. Make sure the hub/switch is PoE-compliant.

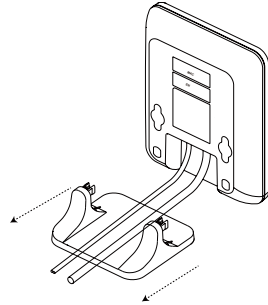
2a. (Desktop Installation) Attach and remove the base stand.

Attach the Base Stand



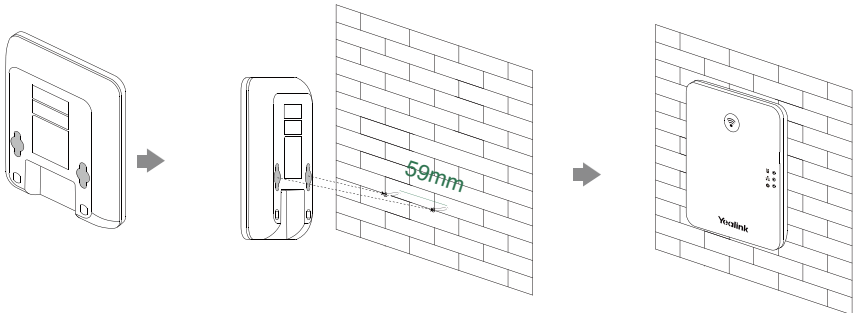
Align the snap-fits with the corresponding holes and push forward, snapping them into the holes.

Remove the Base Stand

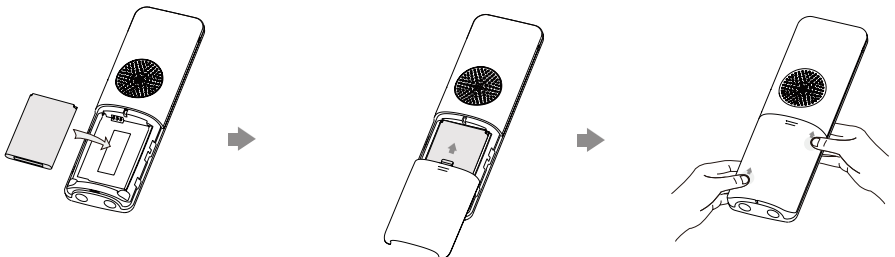


Remove the snap-fits from the holes horizontally.

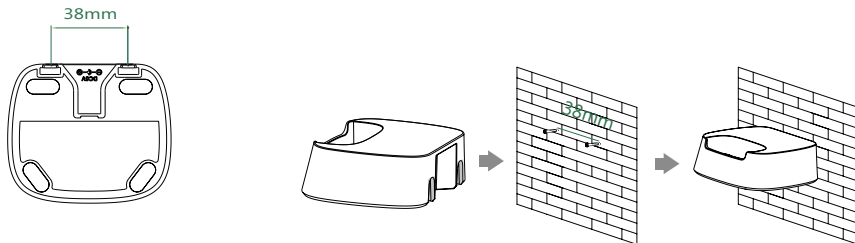
2b. (Wall-Mount Installation) Attach the base station.



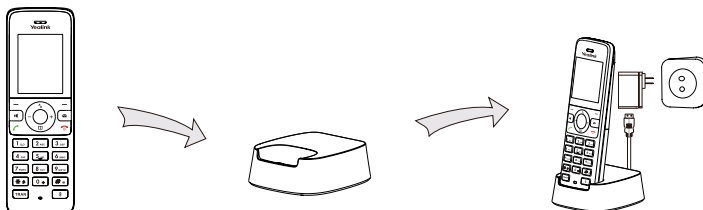
3. Insert the battery into the handset.



4. (Optional) Mount the charging cradle to the wall.

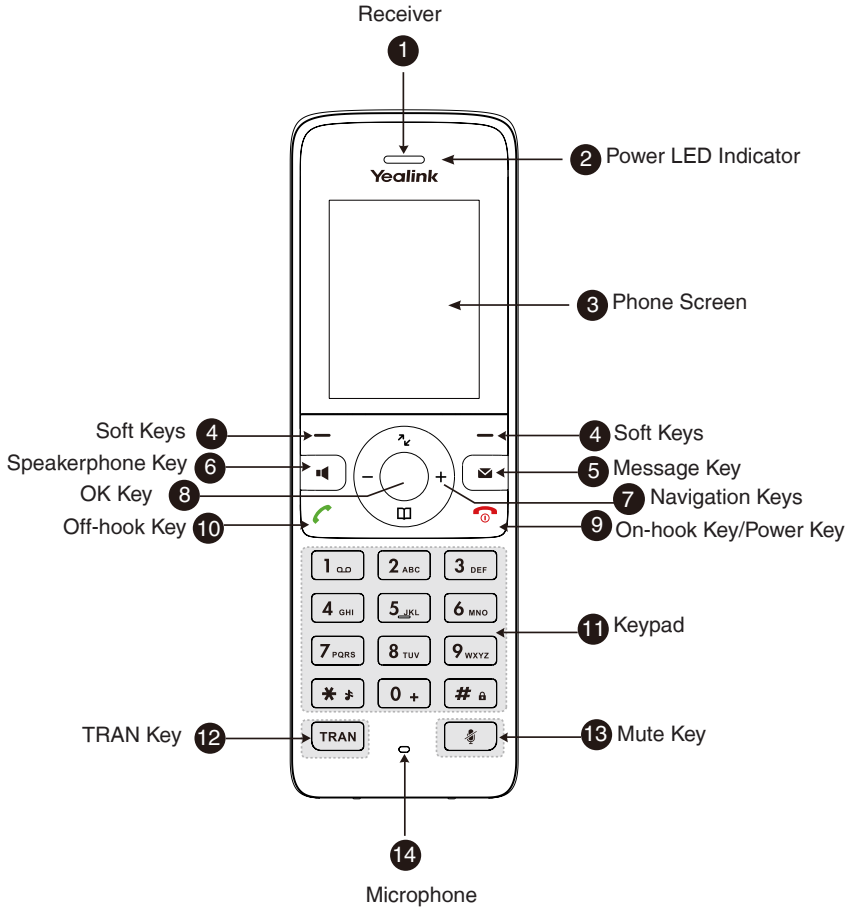


5. Connect the charging cradle and charge the handset.

**Note:**

- Use Yealink-supplied power adapter (5V/0.6A). A third-party power adapter may damage the handset.
- Check the charging status on the top-right corner of the LCD screen.

Hardware Component Instructions



Regulatory Notices

Operating Ambient Temperatures

- Operating temperature: +14 to 122°F (-10 to 50°C)
- Relative humidity: 5% to 90%, noncondensing
- Storage temperature: -22 to +160°F (-30 to +70°C)

Warranty

Our product warranty is limited only to the unit itself, when used normally in accordance with the operating instructions and the system environment. We are not liable for damage or loss resulting from the use of this product, or for any claim from a third party. We are not liable for problems with Yealink device arising from the use of this product; we are not liable for financial damages, lost profits, claims from third parties, etc., arising from the use of this product.

DC symbol

⎓ is the DC voltage symbol.

Restriction of Hazardous Substances Directive (RoHS)

This device complies with the requirements of the EU RoHS Directive. Statements of compliance can be obtained by contacting support@yealink.com.

Safety Instructions

Save these instructions. Read these safety instructions before use!

The following basic safety precautions should always be followed to reduce risk of fire, electrical shock, and other personal injury.

⚠ General Requirements

- Before you install and use the device, read the safety instructions carefully and observe the situation during operation.
- During the process of storage, transportation, and operation, please always keep the device dry and clean.
- During the process of storage, transportation, and operation, please avoid collision and crash of the device.
- Please attempt not to dismantle the device by yourself. In case of any discrepancy, please contact the appointed maintenance center for repair.
- Without prior written consent, no organization or individual is permitted to make any change to the structure or the safety design of the device. Yealink is under no circumstance liable to consequences or legal issues caused by such changes.
- Please refer to the relevant laws and statutes while using the device. Legal rights of others should be respected as well.

⚠ Environmental Requirements

- Place the device at a well-ventilated place. Do not expose the device under direct sunlight.
- Keep the device dry and free of dusts.
- Place the device on a stable and level platform.
- Please place no heavy objects on the device in case of damage and deformation caused by the heavy load.
- Keep at least 10 cm between the device and the closest object for heat dissipation.
- Do not place the device on or near any inflammable or fire-vulnerable object, such as rubber-made materials.
- Keep the device away from any heat source or bare fire, such as a candle or an electric heater.
- Keep the device away from any household appliance with strong magnetic field or electromagnetic field, such as a microwave oven or a refrigerator.

⚠ Operating Requirements

- Do not let a child operate the device without guidance.
- Do not let a child play with the device or any accessory in case of accidental swallowing.
- Please use the accessories provided or authorized by the manufacturer only.
- The power supply of the device shall meet the requirements of the input voltage of the device. Please use the provided surge protection power socket only.
- Before plugging or unplugging any cable, make sure that your hands are completely dry.
- Do not spill liquid of any kind on the product or use the equipment near water, for example, near a bathtub, washbowl, kitchen sink, wet basement or near a swimming pool.

- Do not tread on, pull, or over-bend any cable in case of malfunction of the device.
- During a thunderstorm, stop using the device and disconnect it from the power supply. Unplug the power plug and the Asymmetric Digital Subscriber Line (ADSL) twisted pair (the radio frequency cable) to avoid lightning strike.
- If the device is left unused for a rather long time, disconnect it from the power supply and unplug the power plug.
- When there is smoke emitted from the device, or some abnormal noise or smell, disconnect the device from the power supply, and unplug the power plug immediately. Contact the specified maintenance center for repair.
- Do not insert any object into equipment slots that is not part of the product or auxiliary product.
- Before connecting a cable, connect the grounding cable of the device first. Do not disconnect the grounding cable until you disconnect all other cables.

⚠ Cleaning Requirements

- Before cleaning the device, stop using it and disconnect it from the power supply.
- Use a piece of soft, dry and anti-static cloth to clean the device.
- Keep the power plug clean and dry. Using a dirty or wet power plug may lead to electric shock or other perils.

⚠ ENVIRONMENTAL RECYCLING



Never dispose of the device with domestic waste

Ask your Town Council about how to dispose of it in an environmentally friendly way. The cardboard box, plastic packaging and player components may be recycled in accordance with prevailing recycling regulations in your country.

Always adhere to prevailing regulations

Those who fail to do so may be fined or prosecuted in accordance with the law. The crossed out garbage can that appears on the device means that when it has reached the end of its useful life, it should be taken to a special waste disposal centre and treated separately to general urban waste.

Troubleshooting

The unit cannot supply power to Yealink device.

There is a bad connection with the plug.

1. Clean the plug with a dry cloth.

2. Connect it to another wall outlet.

The usage environment is out of operating temperature range.

1. Use in the operating temperature range.

The cable between the unit and the Yealink device is connected incorrectly.

1. Connect the cable correctly.

You cannot connect the cable properly.

1. You may have connected a wrong Yealink device.

2. Use the correct power supply.

Some dust, etc., may be in the port.

1. Clean the port.

Contact your dealer or authorized service facility for any further questions.

Contact Information

YEALINK NETWORK TECHNOLOGY CO., LTD.

309, 3rd Floor, No.16, Yun Ding North Road, Huli District, Xiamen City, Fujian, P.R.C

YEALINK (EUROPE) NETWORK TECHNOLOGY B.V.

Strawinskylaan 3127, Atrium Building, 8th floor, 1077ZX Amsterdam, The Netherlands

YEALINK (USA) NETWORK TECHNOLOGY CO., LTD.

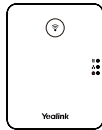
999 Peachtree Street Suite 2300, Fulton, Atlanta, GA, 30309, USA

Made in China

W71P Verpackungsinhalt



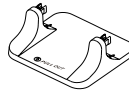
W71H
Mobilteil



W70B Basisstation



Zwei Netzteile



Basisständer



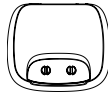
Ethernet-Kabel



Batterieab-
deckung



Wiederauflad-
bare Batterie



Ladestation



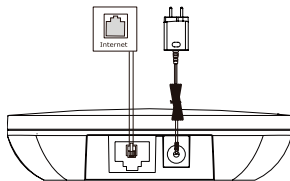
Kurzanleitung

Hinweis: Das Yealink DECT IP phone W71P besteht aus einer W70B Basisstation und einem W71H-Mobilteil.

Das DECT-Telefon zusammensetzen

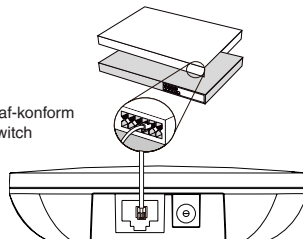
1. Stellen Sie die Basisstation Stromversorgungs- und Netzwerkverbindung anhand Methode a oder Methode b her.

a. Option Wechselstromversorgung



b. Option Power-over-Ethernet (PoE)

IEEE 802.3af-konform
PoE Hub/Switch

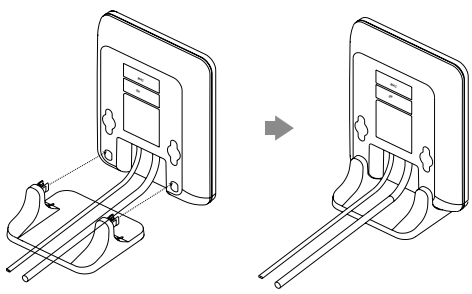


Hinweis:

- Wenn Sie sich für Methode a entscheiden, verwenden Sie das von Yealink mitgelieferte Netzteil (5V/0,6A). Ein Netzteil eines Drittanbieters kann das Basisstation beschädigen.
- Wenn Sie sich für Methode b entscheiden, müssen Sie das Netzteil nicht anschließen. Stellen Sie sicher, dass der Hub/Switch PoE-konform ist.

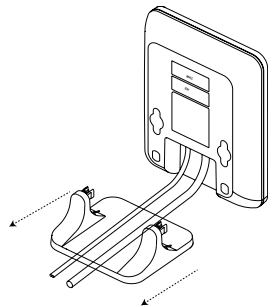
2a. (Installation auf einer Arbeitsfläche) Anbringen und Entfernen des Standfußes.

Anbringen des Standfußes



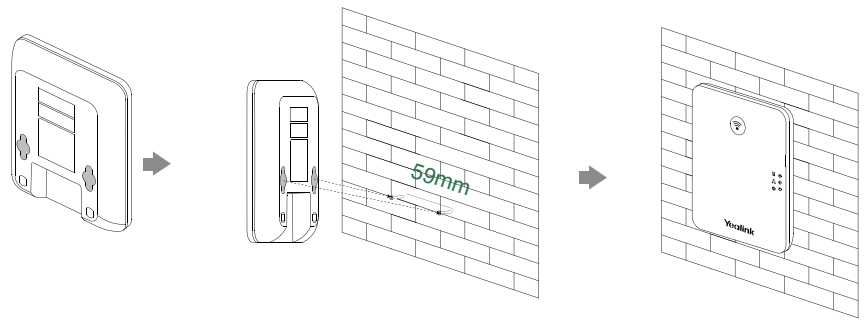
Richten Sie die Einrasthaken an den entsprechenden Öffnungen aus und drücken Sie diese in die Öffnungen hinein bis sie einrasten.

Entfernen des Standfußes

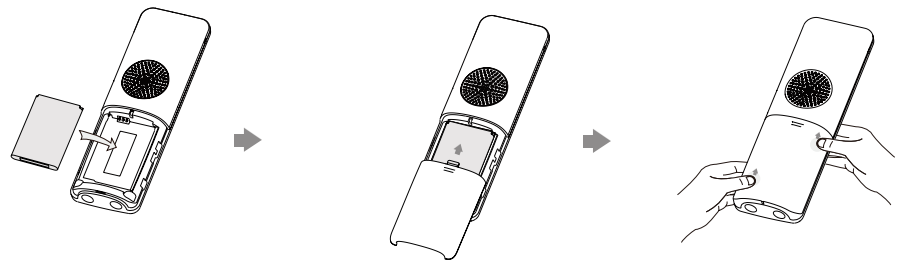


Entfernen Sie die Einrasthaken indem Sie sie in horizontaler Richtung aus Öffnungen herausziehen.

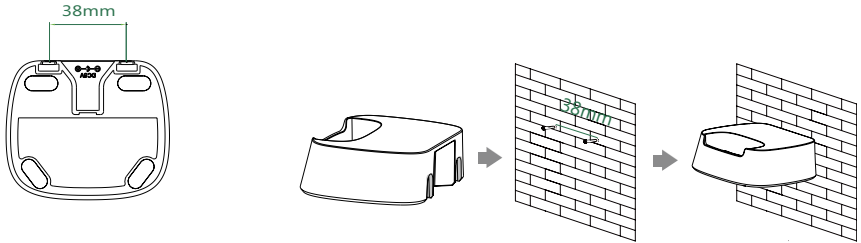
2b. (Wandmontage) Anbringen der Basisstation



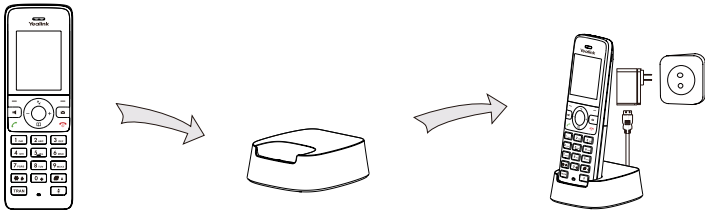
3. Legen Sie die Batterie in das Mobilteil ein.



4. (Optional) Befestigen Sie die Ladestation wie unten dargestellt an der Wand:



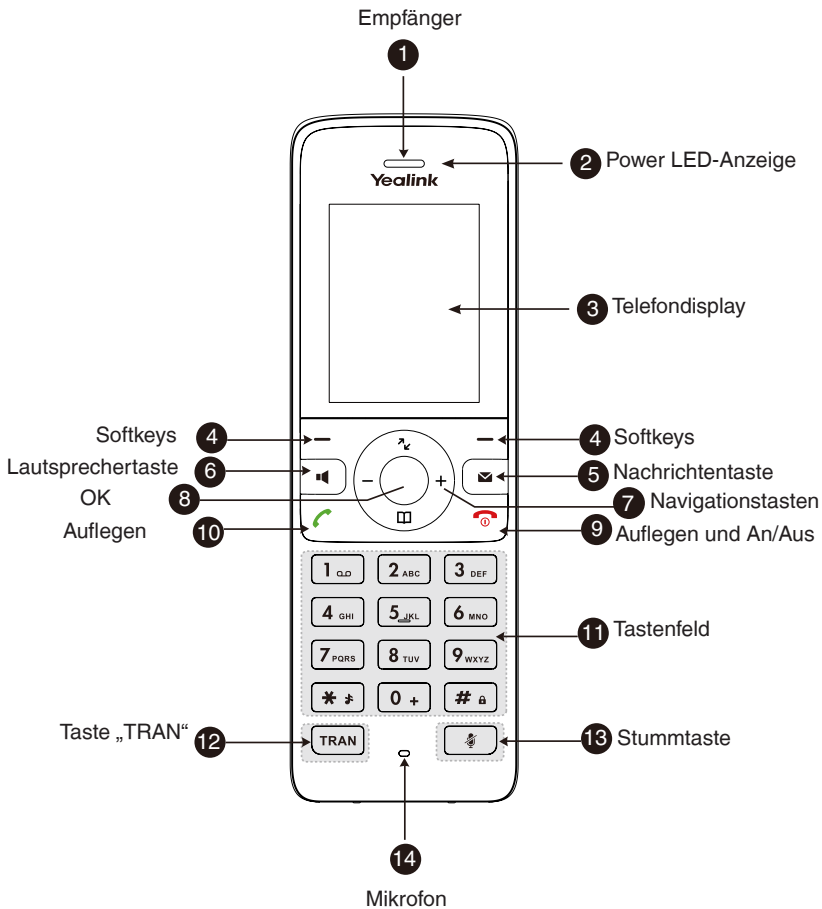
5. Verbinden Sie die Ladestation und laden Sie das Mobilteil auf.



Hinweis:

- Verwenden Sie das von Yealink mitgelieferte Netzteil (5V/0.6A). Ein Netzteil eines Drittanbieters kann das Mobilteil beschädigen.
- Der Ladestatus des Mobilteils wird oben rechts im Display angezeigt.

Anleitung für die Hardware-Komponente



Sicherheitshinweise

Betriebsumgebungstemperaturen

- Betriebstemperatur: -10 bis 50 °C
- Relative Luftfeuchtigkeit: 5 % bis 90 %, nicht kondensierend
- Lagertemperatur: -30 bis + 70 °C

Garantie

Unsere Produktgarantie ist auf das Gerät selbst beschränkt, wenn es normal und gemäß den Betriebsanweisungen und der Systemumgebung verwendet wird. Wir sind weder für Schäden oder Verluste haftbar, die aus der Verwendung dieses Produkts entstehen, noch für Ansprüche eines Dritten. Wir sind nicht haftbar für Probleme mit dem Yealink Gerät, die aus der Verwendung dieses Produkts entstehen. Wir sind nicht haftbar für finanzielle Schäden, Gewinnverluste, Ansprüche Dritter etc., die aufgrund der Verwendung dieses Produkts entstehen.

Symbol DC

⎓ ist das Symbol für DC-Spannung.

Richtlinie zur Beschränkung der Verwendung bestimmter gefährlicher Stoffe in Elektro- und Elektronikgeräten (RoHS)

Das Gerät erfüllt die Anforderungen der RoHS-Richtlinie der EU. Für Bestätigungen der Einhaltung können Sie sich an support@yealink.com wenden.

Sicherheitshinweise

Bewahren Sie diese Anweisungen auf. Lesen Sie diese Sicherheitshinweise vor der Verwendung!

Die folgenden grundlegenden Vorsichtsmaßnahmen müssen zur Vermeidung von Bränden, Stromschlag und anderen Verletzungen immer befolgt werden.

⚠ Allgemeine Vorschriften

- Lesen Sie vor der Installation und Verwendung des Geräts die Sicherheitshinweise sorgfältig durch und beobachten Sie die Situation im Betrieb.
- Halten Sie das Gerät während der Lagerung, dem Transport und dem Betrieb stets sauber und trocken.
- Vermeiden Sie während der Lagerung, dem Transport und dem Betrieb stets Zusammenprallen und Stürze des Geräts.
- Versuchen Sie nicht das Gerät eigenständig zu demontieren. Wenden Sie sich im Falle von Mängeln an das zuständige Wartungszentrum für eine Reparatur.
- Ohne vorherige schriftliche Zustimmung dürfen weder Unternehmen noch Einzelperson Änderungen an der Struktur oder dem Sicherheitskonzept des Geräts vornehmen. Yealink übernimmt unter keinen Umständen die Haftung für Folgen oder Rechtsansprüche, die auf solche Änderungen zurückzuführen sind.
- Beachten Sie bitte die entsprechenden Gesetze und Vorschriften bei der Verwendung des Geräts. Die gesetzlichen Rechte Dritter müssen ebenfalls beachtet werden.

⚠ Umweltvorschriften

- Stellen Sie das Gerät an einem gut belüfteten Ort auf. Setzen Sie das Gerät nicht direkter Sonneneinstrahlung aus.
- Halten Sie das Gerät trocken und frei von Staub.
- Stellen Sie das Gerät auf einen stabilen, ebenen Untergrund.
- Stellen Sie keine schweren Gegenstände auf das Gerät, da Beschädigung und Verformungen durch zu hohe Last möglich sind.
- Halten Sie mindestens 10 cm Abstand zwischen dem Gerät und dem nächsten Objekt ein, um die Wärmeabfuhr zu gewährleisten.
- Stellen Sie das Gerät nicht auf oder in der Nähe von entflammaren oder brandgefährdeten Objekt wie Gummimaterialien auf.

- Halten Sie das Gerät fern von Hitzequellen und offenem Feuer, wie Kerzen oder einer elektrischen Heizung.
- Halten Sie das Gerät fern von jedem Haushaltsgerät mit starkem Magnetfeld oder Elektromagnetfeld, z.B. einem Mikrowellenherd oder einem Kühlschrank.

⚠ Betriebsvorschriften

- Lassen Sie das Gerät nicht ohne Aufsicht durch ein Kind verwenden.
- Lassen Sie kein Kind mit dem Gerät oder einem Zubehörteil spielen, da Kleinerteile verschluckt werden können.
- Bitte verwenden Sie ausschließlich Zubehör, das vom Hersteller bereitgestellt oder genehmigt wurde.
- Die Stromversorgung des Geräts muss den Anforderungen der Eingangsspannung des Gerätes entsprechen. Bitte verwenden Sie ausschließlich den bereitgestellten Überspannungsschutz an der Steckdose.
- Achten Sie vor dem Anschließen oder Abziehen des Kabels darauf, dass Ihre Hände vollständig trocken sind.

- Verschütten Sie keine Flüssigkeiten auf das Gerät und verwenden Sie es nicht in der Nähe von Wasser, beispielsweise in der Nähe einer Badewanne, Wuschschüssel, einem Spülbecken, in einem feuchten Keller oder in der Nähe eines Schwimmbeckens.
- Treten Sie nicht auf das Kabel, ziehen und verbiegen Sie es nicht, da es dadurch zu einer Fehlfunktion des Geräts kommen kann.
- Schalten Sie das Gerät bei Gewitter aus und trennen Sie es von der Stromversorgung. Ziehen Sie das Netzkabel und das ADSL-Twisted-Pair-Kabel (Festnetz-kabel) zur Vermeidung eines Blitzschlags.
- Wenn das Gerät längere Zeit ungenutzt bleibt, trennen Sie es von der Stromversorgung und ziehen Sie den Netzstecker.
- Wenn Rauch oder ungewöhnliche Geräusche oder Gerüche aus dem Gerät austreten, trennen Sie das Gerät sofort von der Stromversorgung und ziehen Sie das Netzkabel. Wenden Sie sich an das angegebene Wartungszentrum für eine Reparatur.
- Führen Sie keine Gegenstände in Einschübe oder Anschlussöffnungen des Geräts ein, die kein Bestandteil des Produktes oder ein Zubehörtteil sind.
- Schließen Sie zuerst das Erdungskabel des Geräts an, bevor Sie ein Kabel anschließen. Trennen Sie das Erdungskabel nicht, bis nicht alle anderen Kabel entfernt wurden.

⚠ Reinigungsvorschriften

- Bevor Sie das Gerät reinigen, schalten Sie es aus und trennen Sie es von der Stromversorgung.
- Verwenden Sie ein Stück trockenes, weiches und antistatisches Tuch zum Reinigen des Geräts.
- Halten Sie das Netzkabel sauber und trocken. Über einen schmutzigen oder nassen Netzstecker kann es zu einem elektrischen Schlag oder anderen Gefahren kommen.

⚠ UMWELTFREUNDLICHE VERWERTUNG

Entsorgen Sie das Gerät nicht mit dem Hausmüll.

Erkundigen Sie sich bei Ihrer Stadtverwaltung, wie Sie das Gerät umweltfreundlich entsorgen können. Pappkarton, Kunststoffverpackung und Bauteile des Gerätes können im Einklang mit den geltenden Vorschriften in Ihrem Land verwertet werden.

Halten Sie stets die geltenden Vorschriften ein. Deren Nichtbeachtung kann eine Buße oder Verfolgung gemäß dem geltenden Recht nach sich ziehen. Die durchgestrichene Mülltonne auf dem Gerät bedeutet, dass das Gerät am Ende seiner Nutzungsdauer zu einer speziellen Elektroschrottsammelstelle gebracht und vom Hausmüll gesondert verarbeitet werden muss.



gesondert verarbeitet werden muss.

Fehlerbehebung

Die Einheit kann das Yealink Gerät nicht mit Strom versorgen.

Es gibt Probleme mit dem Steckanschluss.

1. Reinigen Sie den Stecker mit einem trockenen Tuch.
2. Schließen Sie ihn an einer anderen Steckdose an. Die Umgebungstemperatur liegt oberhalb des Betriebstemperaturbereichs.
1. Verwenden Sie die Einheit innerhalb des Betriebstemperaturbereichs. Das Kabel zwischen der Einheit und dem Yealink Gerät ist nicht richtig angeschlossen.
1. Schließen Sie das Kabel richtig an. Das Kabel lässt sich nicht richtig anschließen.
1. Sie haben möglicherweise ein falsches Yealink Gerät angeschlossen.
2. Verwenden Sie die richtige Stromversorgung. Es befindet sich möglicherweise Staub etc. im Port.
1. Reinigen Sie den Port.
- Servieren Sie sich bei weiteren Fragen mit Ihrem Händler oder Ihrer anerkannten Servicestelle in Verbindung.

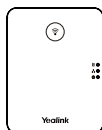
Kontaktdaten des Ansprechpartners

YEALINK NETWORK TECHNOLOGY CO., LTD.
309, 3rd Floor, No. 16, Yun Ding North Road, Huli District, Xiamen City, Fujian, VR China
YEALINK (EUROPE) NETWORK TECHNOLOGY B.V.
Strawinskylaan 3127, Atrium Building, 8th floor, 1077XZ Amsterdam, Niederlande
YEALINK (USA) NETWORK TECHNOLOGY CO., LTD.
999 Peachtree Street Suite 2300, Fulton, Atlanta, GA, 30309, USA
Hergestellt in China

W71P Contenido de la caja



Auricular
W71H



W70B Base



Dos alimentadores
AC/DC



Soporte



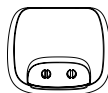
Cable Ethernet



Tapa de batería



Batería recargable



Base de carga



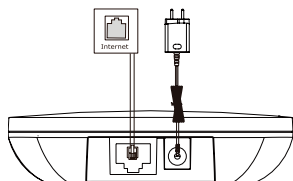
Guía de inicio
rápido

Nota: W71P Teléfono Inalámbrico DECT IP de Yealink consiste en una W70B base y un Handset W71H.

Instalación del teléfono DECT

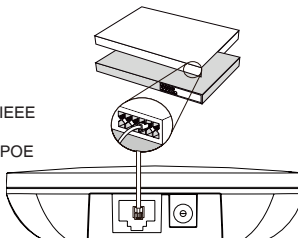
1. Conecte la estación base a la red y la alimentación de una de las dos formas posibles:

a. Opción Alimentador



b. Opción PoE (Power over Ethernet)

conforme a IEEE
802.3af
Hub/Switch POE

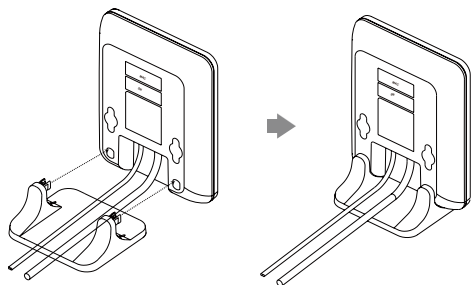


Nota:

- Utilice siempre el adaptador original de Yealink (5V/0.6A). El uso de un adaptador de terceros podría dañar la estación base.
- Si se proporciona la alimentación en línea (PoE), no necesita conectar el alimentador. Asegúrese de que el hub/switch sea compatible con PoE.

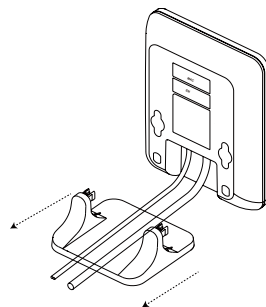
2a. (Instalación Sobremesa) Conectar y desconectar el soporte.

Conectar el Soporte



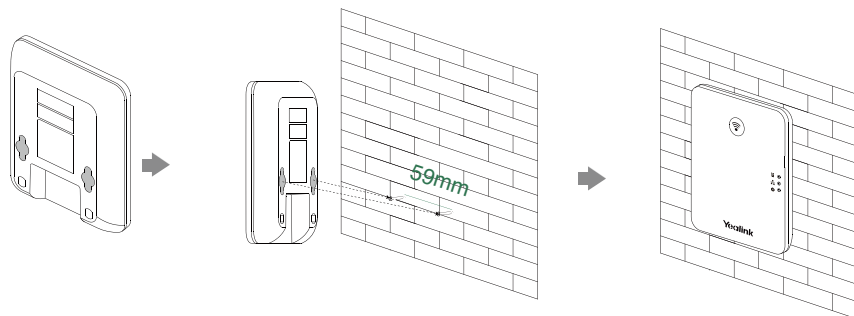
Alinear pestañas con agujeros correspondientes e empujar hasta encajar las pestañas

Desconectar el Soporte

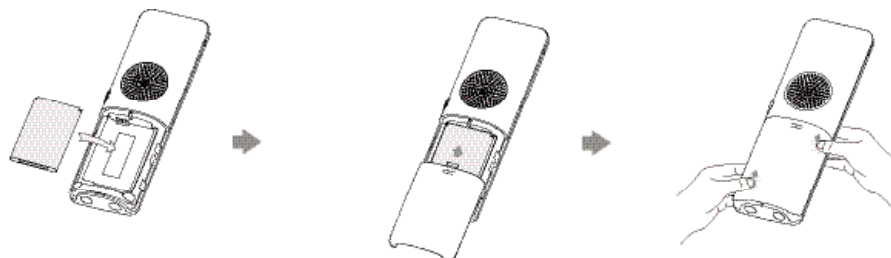


Tirar horizontalmente hasta soltar las pestañas.

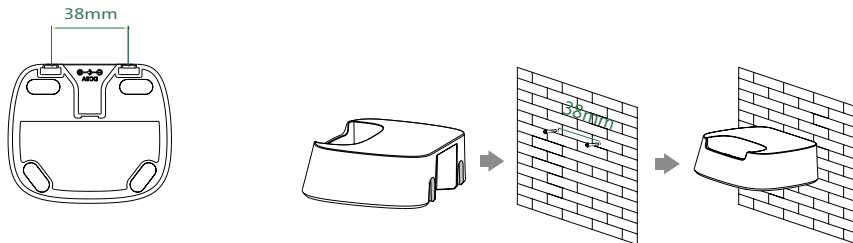
2b. (Montaje en la pared) Conectar la estación base.



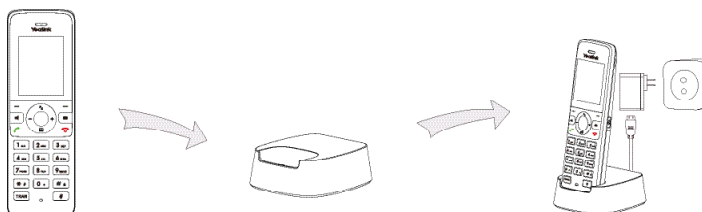
3. Introduzca las baterías en el teléfono:



4. (Opcional) Coloque la base de carga en la pared.

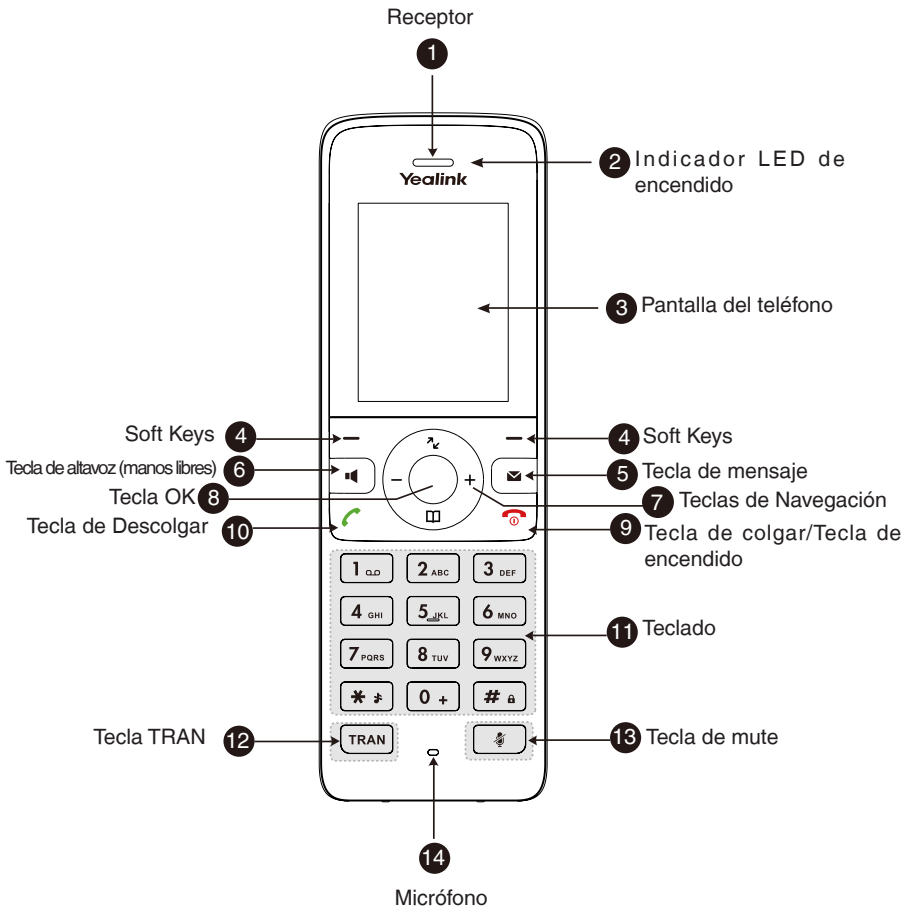


5. Conecte la base de carga y cargue el teléfono.

**Nota:**

- El teléfono debe usarse únicamente con el alimentador original (5V/0.6A). El uso de un adaptador de terceros podría dañar el teléfono.
- El estado de carga del teléfono se indica en la esquina superior derecha de la pantalla LCD.

Instrucciones de Componentes de Hardware



Instrucciones de seguridad

Temperatura ambiente de funcionamiento

- Temperatura de funcionamiento: +14 to 122°F (-10 to 50°C)
- Humedad relativa: 5% to 90%, sin condensación
- Temperatura de almacenaje: -22 to +160°F (-30 to +70°C)

Garantía

La garantía del producto está limitada solo a la unidad, cuando se usa normalmente de acuerdo con las instrucciones de operación y el entorno del sistema. No somos responsables por daños o pérdidas resultantes del uso de este producto, o por cualquier reclamo de un tercero. No nos hacemos responsables de los problemas con el dispositivo Yealink que surjan del uso de este producto; No nos hacemos responsables de los daños financieros, pérdidas de beneficios, reclamaciones de terceros, etc., que surjan del uso de este producto.

Símbolo CC

--- Es el símbolo de voltaje de CC.

Directiva de Restricción de Sustancias Peligrosas (RoHS)

Este dispositivo cumple con los requisitos de la directiva RoHS de la UE. Las declaraciones de cumplimiento se pueden obtener contactando a support@yealink.com.

Instrucciones de seguridad

Conserve estas instrucciones. ¡Lea estas instrucciones de seguridad antes de usar el dispositivo!

Las siguientes instrucciones básicas de seguridad deben respetarse siempre para reducir el riesgo de incendio, descarga eléctrica y otras lesiones personales.

⚠️ Requisitos generales

- Lea detenidamente estas instrucciones de seguridad antes de instalar y usar el dispositivo y controle la situación durante el funcionamiento.
- Mantenga siempre el dispositivo seco y limpio durante el proceso de almacenaje, transporte y funcionamiento.
- Evite golpes y sacudidas en el dispositivo durante el proceso de almacenaje, transporte y funcionamiento.
- No desmonte el dispositivo por su cuenta. En caso de fallos, póngase en contacto con el centro de mantenimiento designado para su reparación.
- No se permite hacer modificaciones en la estructura ni el diseño de seguridad del dispositivo sin previo consentimiento por escrito. Yealink no será responsable bajo ninguna circunstancia de las consecuencias o problemas legales derivados de dichas modificaciones.
- Consulte las leyes y estatutos pertinentes cuando use el dispositivo. También deben respetarse los derechos legales de terceros.

⚠️ Requisitos ambientales

- Coloque el dispositivo en un lugar bien ventilado. No exponga el dispositivo a la luz del sol directa.
- Mantenga el dispositivo seco y libre de polvo.
- Coloque el dispositivo sobre una plataforma estable y nivelada.
- No coloque objetos pesados sobre el dispositivo para evitar daños o deformaciones causadas por el peso.
- Deje al menos 10 cm de distancia entre el dispositivo y los objetos más cercanos para facilitar la disipación del calor.
- No coloque el dispositivo encima o cerca de objetos inflamables o vulnerables al fuego, como materiales hechos de goma.
- Mantenga el dispositivo alejado de fuentes de calor o fuego vivo, como velas o radiadores eléctricos.

• Mantenga el dispositivo alejado de aparatos domésticos con campos magnéticos o electromagnéticos intensos, como hornos microondas o neveras.

⚠️ Requisitos de funcionamiento

- No permita que los niños utilicen el dispositivo sin supervisión.
- No permita que los niños jueguen con el dispositivo ni sus accesorios para evitar asfixia accidental.
- Utilice únicamente los accesorios suministrados o autorizados por el fabricante.
- La alimentación eléctrica debe cumplir los requisitos de voltaje de entrada del dispositivo. Utilice únicamente una toma de corriente con protección contra sobretensiones.
- Asegúrese de tener las manos completamente secas antes de enchufar o desenchufar los cables.

- No derrame líquidos de ningún tipo sobre el producto ni use el equipo cerca de agua, por ejemplo, cerca de una bañera, palangana, fregadero, sótanos húmedos o piscinas.
- No pise, estire ni retuerza los cables para evitar fallos del dispositivo.
- En caso de tormenta, deje de usar el aparato y desenchúfelo de la alimentación eléctrica. Desenchufe la clavija eléctrica y el cable de par trenzado (el cable de radiofrecuencia) de la línea de abonado digital simétrica (ADSL, por sus siglas en inglés) para evitar rayos.
- Si deja el dispositivo sin utilizar durante mucho tiempo, desconéctelo de la alimentación eléctrica y desenchufe la clavija eléctrica.
- Si sale humo del dispositivo o ruidos u olores anormales, desconecte el dispositivo de la alimentación eléctrica y desenchufe la clavija eléctrica inmediatamente. Póngase en contacto con el centro de mantenimiento designado para su reparación.
- No introduzca ningún objeto que no forme parte del producto o de los accesorios en las ranuras del equipo.
- Antes de conectar un cable, conecte el cable de toma de tierra del dispositivo. No desconecte el cable de toma de tierra hasta que haya desconectado los demás cables.

⚠️ Requisitos de limpieza

- Antes de limpiar el dispositivo, deje de utilizarlo y desconéctelo de la alimentación eléctrica.
- Utilice un trapo suave, seco y antiestático para limpiar el dispositivo.
- Mantenga el enchufe eléctrico limpio y seco. Si usa un enchufe eléctrico sucio o húmedo podría provocar una descarga eléctrica y otros peligros.

⚠️ RECICLAJE AMBIENTAL



Nunca desheche el equipo con los residuos domésticos

Pregunte en su ayuntamiento cómo desecharlo de forma respetuosa con el medio ambiente. Se debe reciclar la caja de cartón, el embalaje de plástico y los componentes en conformidad con la normativa de reciclaje vigente en su país.

Respete siempre la normativa vigente

En caso de incumplirla, podría ser multado o procesado en cumplimiento de la ley. El cubo de basura tachado que aparece en el producto indica que debe llevarse a un centro de eliminación de residuos especiales y debe tratarse por separado de los residuos urbanos al final de su vida útil.

Problemas y soluciones

La fuente de alimentación no alimenta al dispositivo de Yealink.

Hay una mala conexión con el enchufe.

1. Limpie el enchufe con un trapo seco.
2. Conecte a una toma de pared diferente.

La temperatura del entorno está fuera del rango de temperatura de funcionamiento.

1. Asegúrese de que la temperatura del entorno está dentro de los límites permitidos.

El cable entre la unidad y el dispositivo de Yealink no está conectado correctamente.

1. Conecte el cable correctamente.
- El cable no se puede conectar correctamente.
1. Es posible que haya conectado un dispositivo incorrecto.
2. Utilice la fuente de alimentación correcta.

El puerto está sucio.

1. Limpie el puerto

Póngase en contacto con su distribuidor o centro de atención autorizado para cualquier consulta.

Información de Contacto

YEALINK NETWORK TECHNOLOGY CO.,LTD.

309, 3rd Floor, No.16, Yun Ding North Road, Huli District, Xiamen City, Fujian, P.R.C

YEALINK (EUROPE) NETWORK TECHNOLOGY B.V.

Strawinskylaan 3127, Atrium Building, 8th floor, 1077ZX Amsterdam, The Netherlands

YEALINK (USA) NETWORK TECHNOLOGY CO., LTD.

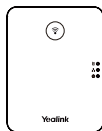
999 Peachtree Street Suite 2300, Fulton, Atlanta, GA, 30309, USA

Made in China

W71P Contenu de la boîte



Combiné
W71H



W70B Base



Deux adaptateurs
d'alimentation



Socle de base



Câble Ethernet



Batterie couvrir



Batterie
rechargeable



Socle de chargeur



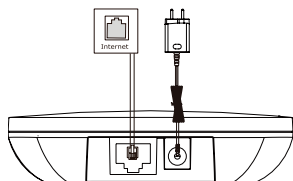
Guide de
démarrage
rapide

Remarque : Le Yealink W71P inclut une W70B base et un combiné DECT W71H.

Montage du téléphone DECT

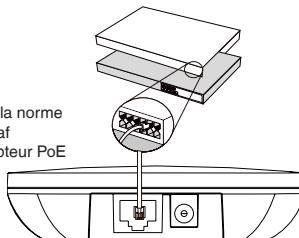
1. Procédez à la connexion au réseau et à l'alimentation électrique de la station de base d'une des façons suivantes, comme illustré ci-dessous.

A. Option Alimentation secteur



B. Option PoE (Power over Ethernet)

conforme à la norme
IEEE 802.3af
Hub/Interrupteur PoE

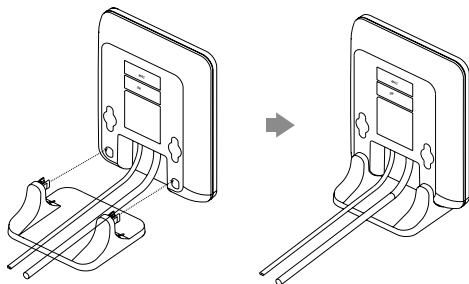


Remarque :

- Si vous choisissez la méthode a., utilisez l'adaptateur secteur fourni par Yealink (5 V/0,6A). L'utilisation d'un adaptateur tiers est susceptible d'endommager la station de base.
- Si vous choisissez la méthode b., vous n'avez pas besoin de brancher l'adaptateur secteur. Assurez-vous que le commutateur/routeur est compatible PoE.

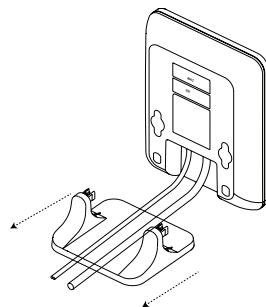
2a. (installation de bureau) Attacher et Détacher le socle de la base.

Attacher le socle de la base



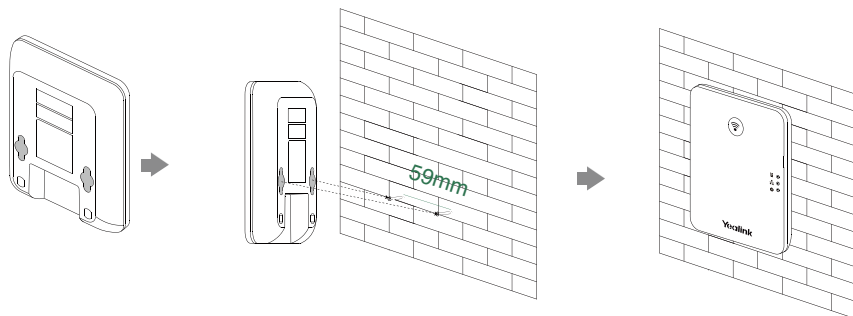
Aligner les crochets avec les trous correspondants et avancer pour les glisser dans les trous

Détacher le socle de la base

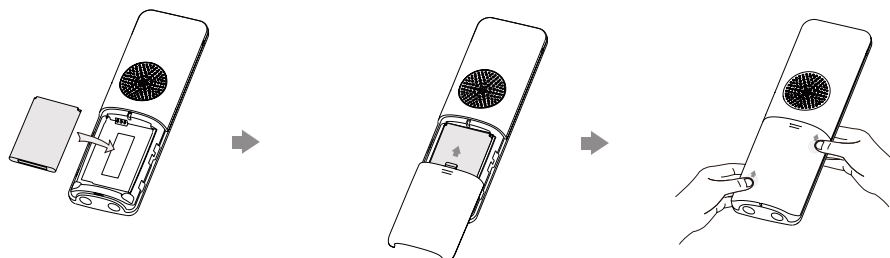


Détacher les crochets des trous horizontalement

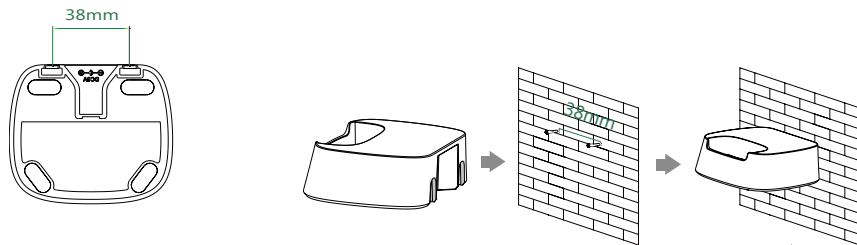
2b. (Installation murale) Attacher la base.



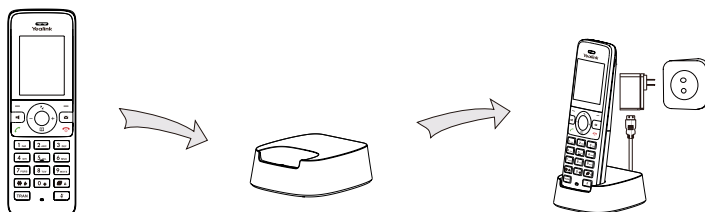
3. Insérez les piles dans le combiné.



4. (Facultatif) Montez le socle chargeur au mur.



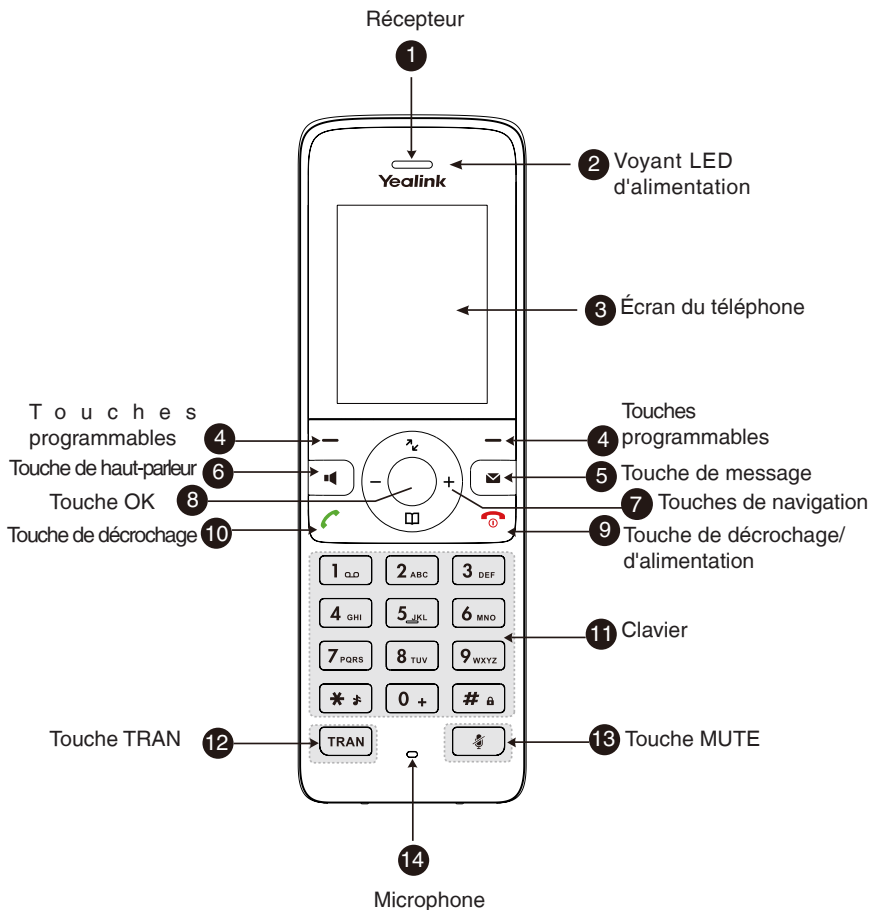
5. Raccordez le socle chargeur et chargez le combiné.



Remarque :

- Le combiné doit uniquement être utilisé avec l'adaptateur d'alimentation d'origine (5V/0.6A). L'utilisation d'un adaptateur tiers est susceptible d'endommager le combiné.
- Le niveau de charge du combiné est indiqué dans le coin supérieur droit de l'écran LCD.

Instructions du composant matériel



Consignes de sécurité

Températures de fonctionnement ambiantes

- Température de fonctionnement : +14 à 122 °F (-10 à 50 °C)
- Humidité relative : 5 % à 90 %, sans condensation
- Température de stockage : -22 à +160 °F (-30 à +70 °C)

Garantie

Notre garantie produit est limitée à l'appareil lui-même, lorsqu'il est utilisé normalement selon le mode d'emploi et l'environnement du système. Nous ne sommes pas responsables des dommages ou pertes découlant de l'utilisation de ce produit ou de toute réclamation d'un tiers. Nous ne sommes pas responsables des problèmes avec les appareils Yealink découlant de l'utilisation de ce produit. Nous ne sommes pas responsables pour les dommages financiers, pertes de profits, réclamations de tiers, etc. découlant de l'utilisation de ce produit.

Symbole DC

— est le symbole de tension CC.

Directive sur les substances dangereuses (RoHS)

Ce dispositif est conforme aux exigences de la directive RoHS de l'Union européenne. Vous pouvez obtenir les déclarations de conformité en envoyant un message à l'adresse : support@yealink.com.

Consignes de sécurité

Gardez ces instructions. Lisez ces consignes de sécurité avant utilisation de l'appareil !

Les précautions de base suivantes doivent toujours être suivies pour réduire le risque d'incendie, d'électrocution et de blessures.

⚠ Exigences générales

- Avant d'installer et d'utiliser l'appareil, lisez les consignes de sécurité et observez la situation pendant le fonctionnement.
- Lorsque l'appareil est rangé, transporté ou utilisé, veuillez le garder toujours propre et sec.
- Lorsque l'appareil est rangé, transporté ou utilisé, veuillez éviter tout choc ou toute collision.
- Ne tentez pas de désassembler vous-même l'appareil. En cas de mauvais fonctionnement, veuillez contacter le centre de service désigné.
- Sans consentement écrit préalable, aucune organisation ou individu n'est autorisé à apporter des changements à la structure ou au dispositif de sécurité de l'appareil. Yealink n'est en aucun cas responsable des conséquences ou des problèmes juridiques causés par ces changements.
- Veuillez vous référer aux lois et règlements pertinents lorsque l'appareil est utilisé. Les droits légaux des tiers doivent également être respectés.

⚠ Exigences environnementales

- Placez l'appareil dans un espace correctement ventilé. N'exposez pas l'appareil à la lumière directe du soleil.
- Gardez l'appareil propre et sec.
- Placez l'appareil sur une surface stable et plate.
- Veuillez ne placer aucun objet lourd sur l'appareil risquant d'entraîner dégâts et déformations.
- Maintenez une distance d'au moins 10 cm entre l'appareil et l'objet le plus proche afin que la chaleur puisse se dissiper.
- Ne placez pas l'appareil sur ou à proximité de tout objet inflammable ou vulnérable au feu, comme des matériaux en caoutchouc.
- Gardez l'appareil loin de toute source de chaleur ou des flammes, comme une bougie ou un radiateur électrique.
- Gardez l'appareil loin de tout appareil électromagnétique avec un fort champ magnétique ou un champ électromagnétique, tel qu'un four à micro-ondes ou un réfrigérateur.

⚠ Exigences d'utilisation

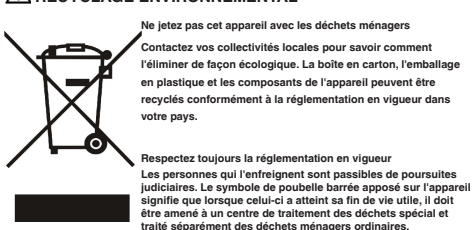
- Ne laissez pas des enfants utiliser l'appareil sans surveillance.
- Ne laissez pas les enfants jouer avec l'appareil ou ses accessoires pour être sûr(e) d'éviter les blessures.
- Utilisez uniquement les accessoires fournis ou autorisés par le fabricant.
- L'alimentation de l'appareil doit satisfaire aux exigences de la tension d'entrée de l'appareil. Veuillez uniquement utiliser la prise protégée contre les surtensions fournies.

- Avant de brancher ou de débrancher tout câble, assurez-vous que vos mains sont complètement sèches.
- Ne renversez aucun liquide sur le produit et n'utilisez pas l'équipement près de l'eau, par exemple, près d'une baignoire, d'un lavabo, d'un évier, dans sous-sol humide ou près d'une piscine.
- Veuillez à ne pas marcher sur, tirer sur, ou plier les câbles de l'appareil, cela pourrait entraîner son mauvais fonctionnement.
- En cas d'orage, n'utilisez pas l'appareil et débranchez-le de son alimentation. Débranchez la prise d'alimentation et l'Asymmetric Digital Subscriber Line (ADSL) à paire torsadée (le câble de fréquence radio) pour éviter la foudre.
- Si l'appareil reste inutilisé pendant une longue période de temps, débranchez-le de l'alimentation électrique et débranchez le cordon d'alimentation.
- Si l'appareil émet de la fumée, des odeurs ou bruits anormaux, débranchez l'appareil de son alimentation et débranchez immédiatement le cordon d'alimentation. Pour toute réparation, contactez le centre de service spécifié.
- N'insérez aucun objet dans les fentes de l'appareil ne faisant pas partie du produit ou n'est pas un produit auxiliaire.
- Avant de brancher un câble, connectez d'abord le câble de mise à la terre du de l'appareil. Ne débranchez pas le câble de mise à la terre jusqu'à ce que tous les autres câbles aient été débranchés.

⚠ Exigences de nettoyage

- Avant de nettoyer l'appareil, arrêtez de l'utiliser et déconnectez-le de son alimentation.
- Utilisez un chiffon doux, sec et antistatique pour nettoyer l'appareil.
- Maintenez la prise d'alimentation propre et sèche. Une prise sale ou humide peut causer des chocs électriques et autres dangers.

♻ RECYCLAGE ENVIRONNEMENTAL



Dépannage

L'unité ne peut pas alimenter le dispositif de Yealink. Mauvaise connexion avec la fiche.

1. Nettoyez la fiche avec un chiffon sec.
 2. Branchez-la sur une autre prise murale.
- L'environnement d'utilisation est hors de la plage de températures de fonctionnement.
1. Utilisez l'appareil dans sa plage de températures de fonctionnement. Le câble entre l'appareil et le dispositif Yealink est mal branché.
 1. Branchez le câble correctement.
 1. Vous ne pouvez pas brancher le câble correctement.
 1. Vous avez peut-être branché le mauvais dispositif Yealink.
 2. Utilisez une source d'alimentation appropriée.
- Le port contient peut être de la poussière.
1. Nettoyez le port.

Contactez votre revendeur ou un réparateur agréé pour toute autre question.

Informations de contact

YEALINK NETWORK TECHNOLOGY CO.,LTD.
309, 3rd Floor, No.16, Yun Ding North Road, Huli District, Xiamen City, Fujian, China
YEALINK (EUROPE) NETWORK TECHNOLOGY B.V.
Strawinskylaan 3127, Atrium Building, 8th floor, 1077ZX Amsterdam, Pays-Bas
YEALINK (USA) NETWORK TECHNOLOGY CO., LTD.
999 Peachtree Street Suite 2300, Fulton, Atlanta, GA, 30309, États-Unis
Fabriqué en Chine



Declaration of Conformity

We, YEALINK(XIAMEN) NETWORK TECHNOLOGY CO.,LTD
Address: 309, 3rd Floor, No.16, Yun Ding North Road,
Huli District, Xiamen City, Fujian, P.R. China
CE DATE: 20th /June/2021
declare that the product:
Type: DECT IP Base Station
Model: W708
meets the essential requirements and other relevant provisions according to the following EC directive
Directive: 2014/30/EU, 2014/53/EU,RED 2014/53/EU;
The presumption of conformity with the essential requirement is ensure according to :

Article 3.1 a (protection of the health &the safety of the user)
Safety: **EN 62368-1:2014+A11:2017**
SAR: ETSI EN 50663:2017, EN 62479:2010
Article 3.1 b (protection requirement with respect to electromagnetic compatibility)
EMC: EN55032:2015 and EN55032:2015/A11:2020, EN55035:2017,
EN 55035:2017/A11:2020, EN 61000-3-2:2014, EN 61000-3-2:2014,
EN 61000-3-3:2013/A1:2019, EN 61000-3-3:2013/A1:2019
EN301489-6 V2.2.1,EN301489-1 V2.2.3
Article 3.2 (effective use of the radio spectrum)
Radio: ETSI EN 301406 V2.2.2

Directive 2011/65/EU and **(EU)2015/863** of the European Parliament and of the Council of 8 June 2011 and 4 June 2015 on the restriction of the use of certain hazardous substances in electrical and electronic equipment(RoHS 2.0)
Directive 2012/19/EU of the European Parliament and of the Council of 4 July 2012 on Waste electrical and electronic equipment(WEEE)
Regulation (EC) No.1907/2006 of the European Parliament and of the Council of 18 December 2006 on Registration, Evaluation, Authorization, and Restriction of Chemicals (REACH)

NAME: Huihu Wang
DATE: 20th /June/2021
TITLE: Sales Manager



Declaration of Conformity

We, YEALINK(XIAMEN) NETWORK TECHNOLOGY CO.,LTD
Address: 309, 3rd Floor, No.16, Yun Ding North Road,
Huli District, Xiamen City, Fujian, P.R. China
CE DATE: 20th /June/2021
declare that the product:
Type: DECT IP Phone
Model: W73H
meets the essential requirements and other relevant provisions according to the following EC directive
Directive: 2014/30/EU, 2014/53/EU,RED 2014/53/EU;
The presumption of conformity with the essential requirement is ensure according to :

Article 3.1 a (protection of the health &the safety of the user)
Safety: **EN 62368-1:2014+A11:2017**
SAR: ETSI EN 50566:2017, EN 50566:2017
Article 3.1 b (protection requirement with respect to electromagnetic compatibility)
EMC: EN55032:2015 and EN55032:2015/A11:2020, EN55035:2017,
EN 55035:2017/A11:2020, EN 61000-3-2:2014, EN 61000-3-2:2014,
EN 61000-3-3:2013/A1:2019, EN 61000-3-3:2013/A1:2019
EN301489-6 V2.2.1,EN301489-1 V2.2.3
Article 3.2 (effective use of the radio spectrum)
Radio: ETSI EN 301406 V2.2.2

Directive 2011/65/EU and **(EU)2015/863** of the European Parliament and of the Council of 8 June 2011 and 4 June 2015 on the restriction of the use of certain hazardous substances in electrical and electronic equipment(RoHS 2.0)
Directive 2012/19/EU of the European Parliament and of the Council of 4 July 2012 on Waste electrical and electronic equipment(WEEE)
Regulation (EC) No.1907/2006 of the European Parliament and of the Council of 18 December 2006 on Registration, Evaluation, Authorization, and Restriction of Chemicals (REACH)

NAME: Huihu Wang
DATE: 20th /June/2021
TITLE: Sales Manager



À propos de Yealink

Yealink (Code mnémonique : 300628) est un fournisseur mondial de premier plan de solutions de communication et de collaboration unifiées, spécialisé dans la vidéoconférence, les communications vocales et la collaboration, dont la mission est d'aider chaque personne et chaque organisation à profiter de la puissance de la devise : « Collaboration facile, productivité élevée ».

Avec la meilleure qualité de sa catégorie, une technologie innovante et des expériences conviviales, Yealink est l'un des meilleurs fournisseurs dans plus de 140 pays et régions, se classe numéro 1 dans la part de marché mondiale du téléphone IP et est le leader du Top 5 sur le marché de la vidéoconférence (Frost & Sullivan, 2021).

Pour plus d'informations sur Yealink, [cliquez ici](#).

Propriété intellectuelle

Copyright © 2023 YEALINK (XIAMEN) NETWORK TECHNOLOGY CO., LTD.

Tous droits réservés. Aucune partie de cette publication ne peut être reproduite ou transmise sous quelque forme ou par quelque moyen que ce soit, électronique ou mécanique, par photocopie, enregistrement ou de toute autre façon, à quelque fin que ce soit, sans l'autorisation écrite expresse de Yealink (Xiamen) Network Technology CO., LTD.

Assistance technique

Consultez Yealink WIKI (<http://support.yealink.com/>) pour télécharger les derniers micrologiciels, lire la documentation, les questions fréquemment posées, et plus encore. Pour un meilleur service, nous vous conseillons d'utiliser le système de tickets d'assistance de Yealink (<http://ticket.yealink.com>) pour nous faire part de tous vos problèmes techniques.



YEALINK (XIAMEN) NETWORK TECHNOLOGY CO.,LTD.
Site web : www.yealink.com
Adresse : No.1 Ling-Xia North Road, High Tech Park, Huli District, Xiamen, Fujian, République populaire de Chine

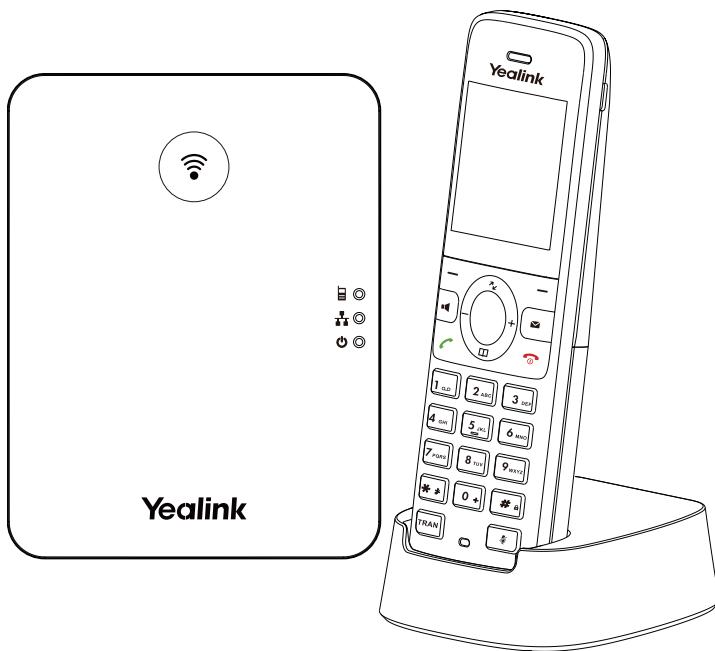
Copyright © 2023 Yealink Inc. Tous droits réservés.



430104002007

Yealink

Telefono DECT IP W71P



Guida introduttiva (V1.0)

W71P Contenuto della confezione



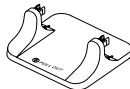
Ricevitore
W71H



Stazione base W70B



2 Alimentatore



Supporto base



Cavo Ethernet



Batteria di
copertura



Batteria ricarica-
bile



Base carica-
batterie



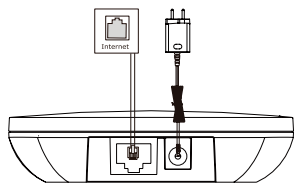
Guida intro-
duttiva

Nota: Il telefono IP DECT Yealink W71P comprende una stazione base W70B e un ricevitore W71H.

Montaggio del telefono DECT

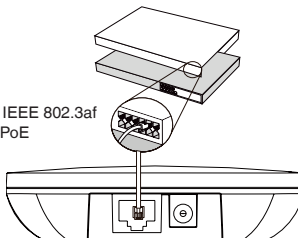
1. Collegare il cavo di rete e quello di alimentazione alla stazione base in uno dei modi illustrati di seguito:

A. Opzione alimentazione CA



B. Opzione PoE (Power over Ethernet)

Conforme a IEEE 802.3af
Hub/Switch PoE

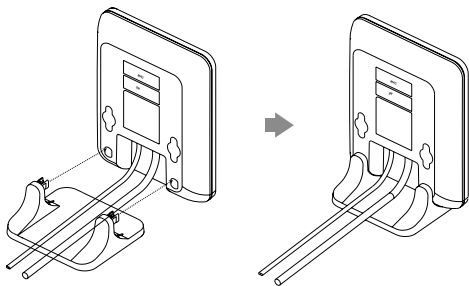


Nota:

- Se si sceglie il metodo a, utilizzare l'adattatore fornito da Yealink (5 V/0,6A). L'uso di un alimentatore di parti terze potrebbe danneggiare il stazione base.
- Se si sceglie il metodo b, non è necessario collegare l'adattatore. Verificare che l'hub/switch sia compatibile con la funzionalità PoE.

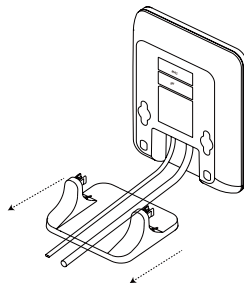
2a. (Installazione da scrivania) attaccare e rimuovere il supporto per la base.

Attaccare il supporto per la base



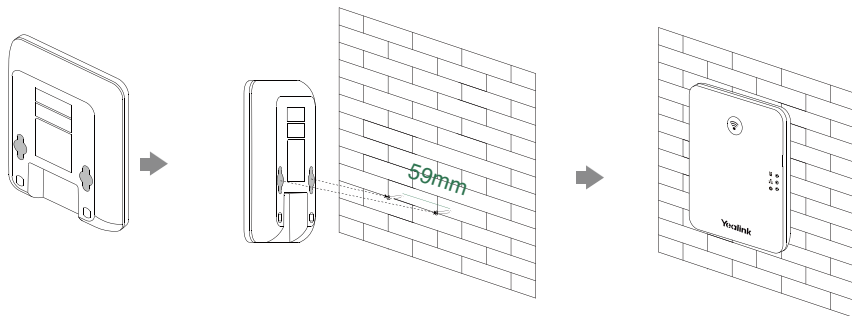
Allineare le fibbie a scatto alla fessura corrispondente e spingere in avanti, chiudendole nelle fessure.

Rimozione del supporto di base

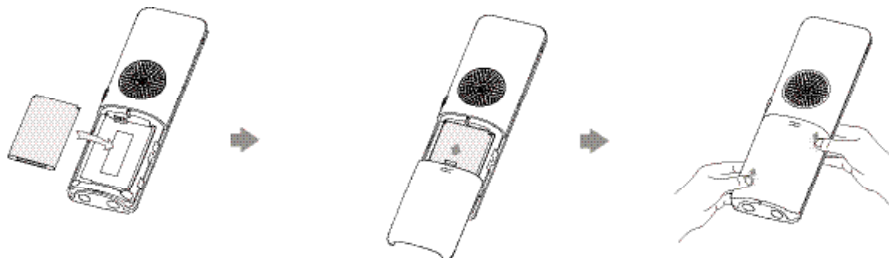


Rimuovere le fibbie a scatto dalle fessure orizzontalmente.

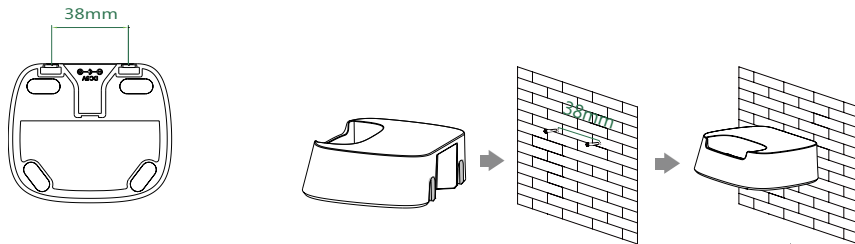
2b. (Installazione a muro) Attaccare la cella.



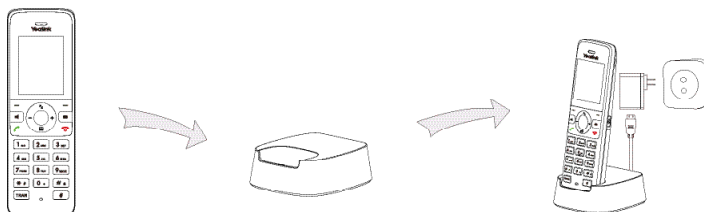
3. Inserire le batterie nel ricevitore.



4. (Opzionale) Fissare la base di ricarica alla parete.



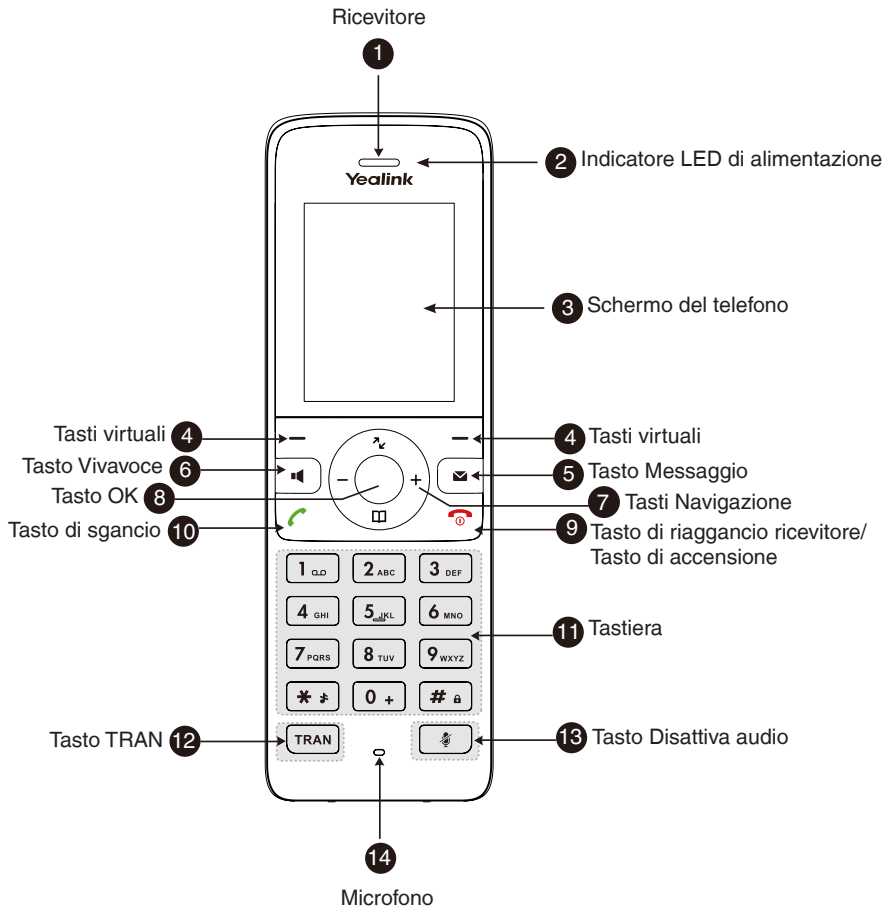
5. Collegare la base di ricarica e caricare il ricevitore.



Nota:

- Il ricevitore deve essere utilizzato solo con l'alimentatore originale (5V/0.6A). L'uso di un alimentatore di parti terze potrebbe danneggiare il ricevitore.
- Lo stato di carica del ricevitore è indicato nell'angolo superiore destro del display LCD.

Istruzioni per i componenti hardware





Declaration of Conformity

We,

YEALINK(XIAMEN) NETWORK TECHNOLOGY CO.,LTD

Address: 309, 3rd Floor, No.16, Yun Ding North Road,

Huli District, Xiamen City, Fujian, P.R. China

CE DATE: 20th /June/2021

declare that the product

Type: DECT IP Base Station

Model: W70B

meets the essential requirements and other relevant provisions according to the following EC directive

Directive: 2014/30/EU, 2014/35/EU, RED 2014/53/EU;

The presumption of conformity with the essential requirement is ensure according to:

Article 3.1 a (protection of the health & the safety of the user)

Safety: EN 62368-1:2014+A11:2017

SRR: ETSI EN 300663:2017, EN 62479:2010

Article 3.1 b (protection requirement with respect to electromagnetic compatibility)

EMC: EN55032:2015 and EN55032:2015/A11:2020, EN55035:2017,

EN 55035:2017/A11:2020, EN 61000-3-2:2014, EN 61000-3-2:2014,

EN 61000-3-3:2013/A1:2019, EN 61000-3-3:2013/A1:2019

EN301489-6 V2.2.1, EN301489-1 V2.2.3

Article 3.2 (effective use of the radio spectrum)

Radio: ETSI EN 301406 V2.2.2

Directive 2011/65/EU and (EU)2015/863 of the European Parliament and of the Council of 8 June 2011 and 4 June 2015 on the restriction of the use of certain hazardous substances in electrical and electronic equipment (RoHS 2.0)

Directive 2012/19/EU of the European Parliament and of the Council of 4 July 2012 on Waste electrical and electronic equipment (WEEE)

Regulation (EC) No.1907/2006 of the European Parliament and of the Council of 18 December 2006 on Registration, Evaluation, Authorization, and Restriction of Chemicals (REACH)

NAME: Huaahu Wang

DATE: 20th /June/2021

TITLE: Senior Manager



Declaration of Conformity

We,

YEALINK(XIAMEN) NETWORK TECHNOLOGY CO.,LTD

Address: 309, 3rd Floor, No.16, Yun Ding North Road,

Huli District, Xiamen City, Fujian, P.R. China

CE DATE: 20th /June/2021

declare that the product

Type: DECT IP Phone

Model: W73H

meets the essential requirements and other relevant provisions according to the following EC directive

Directive: 2014/30/EU, 2014/35/EU, RED 2014/53/EU;

The presumption of conformity with the essential requirement is ensure according to:

Article 3.1 a (protection of the health & the safety of the user)

Safety: EN 62368-1:2014+A11:2017

SRR: ETSI EN 50566:2017, EN 50566:2017

Article 3.1 b (protection requirement with respect to electromagnetic compatibility)

EMC: EN55032:2015 and EN55032:2015/A11:2020, EN55035:2017,

EN 55035:2017/A11:2020, EN 61000-3-2:2014, EN 61000-3-2:2014,

EN 61000-3-3:2013/A1:2019, EN 61000-3-3:2013/A1:2019

EN301489-6 V2.2.1, EN301489-1 V2.2.3

Article 3.2 (effective use of the radio spectrum)

Radio: ETSI EN 301406 V2.2.2

Directive 2011/65/EU and (EU)2015/863 of the European Parliament and of the Council of 8 June 2011 and 4 June 2015 on the restriction of the use of certain hazardous substances in electrical and electronic equipment (RoHS 2.0)

Directive 2012/19/EU of the European Parliament and of the Council of 4 July 2012 on Waste electrical and electronic equipment (WEEE)

Regulation (EC) No.1907/2006 of the European Parliament and of the Council of 18 December 2006 on Registration, Evaluation, Authorization, and Restriction of Chemicals (REACH)

NAME: Huaahu Wang

DATE: 20th /June/2021

TITLE: Senior Manager



Istruzioni di sicurezza

Temperature ambiente di funzionamento

- Temperatura di funzionamento: Da -10 a 50 °C (da +14 a 122 °F)
- Umidità relativa: dal 5 al 90% non condensante
- Temperatura di conservazione: da -30 a +70 °C (da -22 a 160 °F)

Garanzia

La garanzia del nostro prodotto è limitata all'unità stessa, quando utilizzata normalmente in conformità alle istruzioni per il funzionamento e all'ambiente del sistema. Non ci assumiamo alcuna responsabilità di danni o perdite conseguenti all'uso di questo prodotto o di eventuali reclami di terzi. Non ci assumiamo responsabilità di problemi relativi ai dispositivi Yealink con sequenti all'uso di questo prodotto; non ci assumiamo responsabilità di economici, man calti profitti, reclami di terzi, ecc., conseguenti all'uso di questo prodotto.

Simbolo CC

☐ è il simbolo della tensione CC.

Direttiva RoHS (Restriction of Hazardous Substances)

Questo dispositivo è conforme ai requisiti della direttiva RoHS UE. È possibile ottenere le dichiarazioni di conformità contattandoci all'indirizzo support@yealink.com.

Istruzioni per la sicurezza

Conservare le presenti istruzioni. Prima dell'uso leggere queste istruzioni per la sicurezza!

Per ridurre il rischio di incendio, gravi lesioni alle persone o danni agli oggetti, leggere con attenzione le seguenti istruzioni per la sicurezza, prima di usare il prodotto.

⚠️ Requisiti ambientali

- poggiare il prodotto su una superficie stabile, piana e antiscivolo.
- Non collocare il prodotto vicino a fonti di calore, alla luce diretta del sole o vicino a elettrodomestici con un forte campo magnetico o elettromagnetico, quali forni a microonde o frigoriferi.
- Non lasciare che il prodotto entri a contatto con acqua, polvere o sostanze chimiche.
- Proteggere il prodotto da liquidi e vapori aggressivi.
- Non collocare il prodotto sopra o vicino a oggetti infiammabili o sensibili al fuoco, come ad esempio materiali in gomma.
- Non installare il prodotto in ambienti con umidità elevata, ad esempio la stanza da bagno, il locale lavanderia o un interrato umido.

⚠️ Avvertenze per la sicurezza durante l'uso

- Utilizzare solo parti di ricambio e accessori forniti o autorizzati da Yealink. Non è possibile garantire il funzionamento di parti non autorizzate.
- Non porre oggetti pesanti sopra il ricevitore o la stazione base, in quanto il peso eccessivo potrebbe causare deformazioni e danni.
- Non aprire il ricevitore o la stazione base per ripararli, in quanto ciò potrebbe esporre ad alta tensione. Fare eseguire gli interventi di riparazione da personale autorizzato.
- Non lasciare che i bambini utilizzino il prodotto senza supervisione.
- Tenere gli accessori di piccoli dimensioni contenuti nel prodotto fuori dalla portata dei bambini piccoli affinché non li ingoiano.
- Prima di collegare o scollegare un cavo, accertarsi che le mani sia asciutte.
- Non poggiare il ricevitore all'orecchio quando il vivavoce è attivo e quando il telefono suona, in quanto il volume potrebbe essere molto alto e danneggiare l'udito.
- Non utilizzare il dispositivo durante un temporale e scollegarlo dalla rete elettrica per evitare che possa essere danneggiato da un fulmine.
- Se il dispositivo non è utilizzato per lungo tempo, scollegare la base dalla fonte di alimentazione e staccare l'alimentatore.
- Se il dispositivo emette fumo, rumori o odori anormali, scollegarlo immediatamente dall'alimentazione e staccare la spina dell'alimentatore.
- Per scollegare l'apparecchio dalla presa di corrente afferrare la spina e non il cavo di alimentazione.

⚠️ Precauzioni per l'uso della batteria

- Non immergere la batteria nell'acqua per evitare un corto circuito e danni alla batteria stessa.

- Non esporre la batteria alle fiamme e non lasciarla in un luogo dove potrebbe essere sottoposta a temperature troppo elevate con conseguente rischio di esplosione.
- Spegnerne il ricevitore prima di rimuovere la batteria.
- Utilizzare la batteria solo per alimentare questo dispositivo.
- Non aprire o tagliare la batteria: la conseguente fuoriuscita di elettroliti corrosivi può causare lesione agli occhi e alla pelle.
- Utilizzare solo la batteria ricaricabile fornita in dotazione con il ricevitore o batterie espressamente consigliate da Yealink.
- Non smaltire batterie difettose o scariche con i rifiuti domestici. Consegnare le batterie usate al negoziante presso il quale sono state acquistate, a un rivenditore autorizzato o presso un apposito centro di raccolta.

⚠️ Istruzioni per la pulizia

- Prima di pulire la stazione base, scollegarla dalla corrente.
- Prima di pulire il ricevitore, rimuovere la batteria per ridurre il rischio di scosse elettriche.
- Pulire il prodotto con un panno antistatico leggermente umido.
- Tenere la spina di alimentazione pulita e asciutta. Una spina di alimentazione sporca o umida può causare scosse elettriche o altri rischi.

⚠️ ATTENZIONE E RICICLAGGIO



Non smaltire questo dispositivo con i rifiuti domestici

Rivolgersi al comune di residenza per informazioni su come smaltirlo nel rispetto dell'ambiente. Il cartone e la plastica della confezione nonché i componenti del lettore devono essere riciclati rispettando la legislazione pertinente in vigore nel proprio Paese.

Attenersi sempre alle norme vigenti

Coloro che non rispettano tali norme potranno subire multe o essere perseguiti a norma di legge. Il simbolo del cassonetto barrato indica che al termine della sua vita utile il dispositivo dovrà essere consegnato presso un centro di raccolta per rifiuti speciali e riciccolato separatamente dai normali rifiuti urbani.

Batterie: accertarsi che le batterie siano state installate correttamente. Questo telefono utilizza solo batterie ricaricabili.

Informazioni obbligatorie in conformità alle norme per dispositivi alimentati a batteria. Cautela: rischio di esplosione se la batteria è sostituita un'altra di tipo non adatto. Smaltire le batterie come descritto nelle istruzioni.

Risoluzione dei problemi

L'unità non riesce ad alimentare al dispositivo Yealink.

Il collegamento con la spina non funziona.

1. Pulire la spina con un panno asciutto.
2. Collegarla a un'altra presa.

L'ambiente di utilizzo è al di fuori dell'intervallo di temperatura di funzionamento.

1. Utilizzare il dispositivo all'interno dell'intervallo di temperatura di funzionamento.

Il cavo tra l'unità e il dispositivo Yealink è collegato in modo errato.

1. Collegare il cavo correttamente.
- Non è possibile collegare il cavo correttamente.
1. Potrebbe essere stato collegato un dispositivo Yealink sbagliato.

2. Utilizzare l'alimentatore corretto.

Potrebbe essere presente polvere o altro nella porta.

1. Pulire la porta.
- Contattare il rivenditore o il servizio di assistenza autorizzato per ulteriori domande.

Informazioni di contatto

YEALINK NETWORK TECHNOLOGY CO., LTD.
309, 3rd Floor, No.16, Yun Ding North Road, Huli District, Xiamen City, Fujian, Repubblica Popolare cinese

YEALINK (EUROPE) NETWORK TECHNOLOGY B.V.

Strawinskylaan 3127, Atrium Building, 8th floor, 1077ZX Amsterdam, Paesi Bassi

YEALINK (USA) NETWORK TECHNOLOGY CO., LTD.

999 Peachtree Street Suite 2300, Fulton, Atlanta, GA, 30309, USA

Made in China

Informazioni su Yealink

Yealink (Codice azionario: 300628) è un fornitore leader a livello mondiale di soluzioni collaborative e comunicazioni unificate specializzato in videoconferenze, comunicazioni vocali e collaborazione, impegnato ad aiutare ogni individuo e organizzazione ad abbracciare la potenza del concetto "collaborazione semplice, produttività elevata".

Grazie alla qualità migliore della categoria, alla tecnologia innovativa e alla facilità d'uso, Yealink è uno dei migliori fornitori in oltre 140 Paesi e regioni, è al primo posto nella quota di mercato globale di telefoni IP ed è il leader della Top 5 nel mercato delle videoconferenze (Frost & Sullivan, 2021).

Per ulteriori informazioni su Yealink, [fare clic qui](#).

Copyright

Copyright © 2023 YEALINK (XIAMEN) NETWORK TECHNOLOGY CO., LTD.

Tutti i diritti riservati. Nessuna parte della presente pubblicazione può essere riprodotta o trasmessa in alcuna forma o in alcun modo, elettronica o meccanica, per mezzo di fotocopie, registrazioni o altro modo, per alcuno scopo senza l'autorizzazione espressamente scritta di Yealink (Xiamen) Network Technology CO., LTD.

Supporto tecnico

Visitare il sito Yealink WIKI (<http://support.yealink.com/>) per il download di firmware, documenti sui prodotti, domande frequenti e altro. Per una migliore assistenza, consigliamo sinceramente di utilizzare il sistema di creazione di ticket Yealink (<https://ticket.yealink.com>) per inoltrare i propri problemi tecnici.



YEALINK NETWORK TECHNOLOGY CO.,LTD.

Web: www.yealink.com

Addr: No.666 Hu'an Rd.,Huli District Xiamen City, Fujian,
P.R. C

Copyright©2023 Yealink Inc. All rights reserved.